

Analysis of Monetary Poverty and Welfare of Households with Children in 2022

Analytical Report

Analysis of Monetary Poverty and Welfare of Households with Children in 2022

(Results of the Household Budget Survey)

Analytical Report

Chisinau, 2023

Editorial board:

Oleg CARA - Chair of the Editorial Board, General Director

Aurelia SPĂȚARU, Ina EMELIANOVA, Svetlana FURTUNA, Maria VASILIEV

Editors:

Larisa ȘPANCUIUC

© National Bureau of Statistics of the Republic of Moldova,
106 Grenoble St., Chișinău, MD-2019, Republic of Moldova.
Tel.: (373 22) 40 30 00
e-mail: moldstat@statistica.gov.md,
<http://www.statistica.gov.md>

PREFACE

The analytical report contains statistical information on the general characteristics of households with children in 2022 by area of residence, number of children, household type, quintile, level of poverty and welfare.

The main source of information to compute the standard set of poverty indicators is the Household Budget Survey¹ (HBS), carried out by the National Bureau of Statistics (NBS). The main purpose of the HBS is to determine the various aspects of the living standards of the population, including of different socio-economic groups, in terms of income, expenditures, consumption, living conditions and other indicators that characterise the welfare.

Poverty in the Republic of Moldova is measured on the basis of consumption expenditure and absolute poverty threshold (consisting of two components: food and non-food) and includes the monetary value of the consumption basket, deemed to cover the minimum basic needs, acceptable at national level. The poverty indicators were calculated according to the methodology² approved by the Order of NBS Director General No 56 of 24 August 2018 with subsequent changes.

The data are presented without the territory on the left bank of the Nistru river and Bender municipality and are based on the population with usual residence.

This report was developed with the support of UNICEF Moldova.

¹ HBS Metadata <https://statistica.gov.md/public/files/Metadate/CBGC.pdf>

² Methodology to calculate the absolute poverty threshold
https://statistica.gov.md/public/files/Metadate/alte/Metodologie_saracie.pdf

CONTENTS

1. General characteristic of households with children.....	6
2. Households with children and members abroad.....	8
3. Income of households with children	10
4. Child poverty	13
5. Impact of social benefits on child poverty rate.....	15
Annex (Tables).....	16

Symbols used:

- = magnitude zero
0.0 = low value

Note:

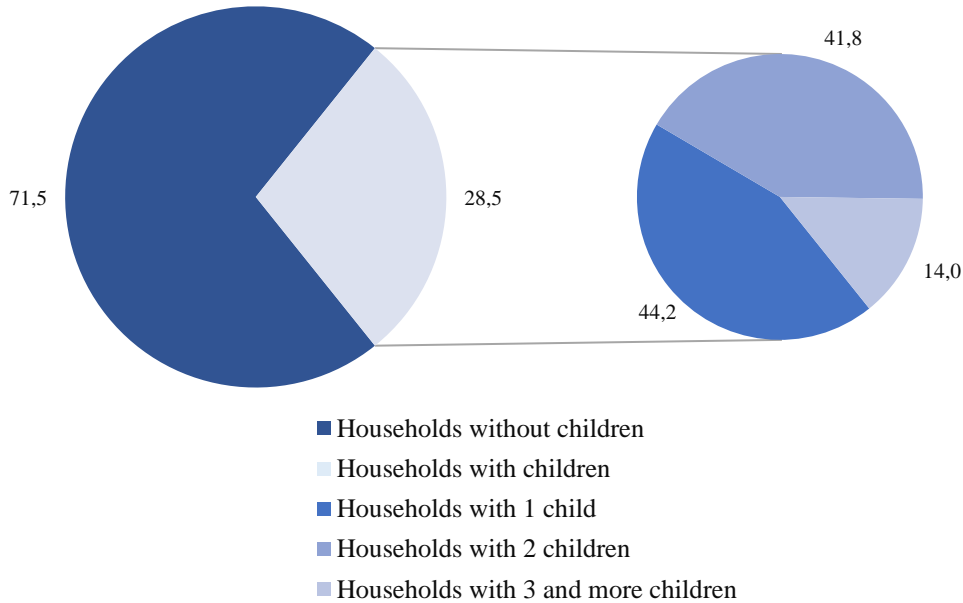
In some cases, there might be insignificant gaps between the indicated totals and corresponding sums of the components, fact that could be explained by data approximation.

1. General characteristic of households with children

According to the 2022 Household Budget Survey, households with children under 18 account for 28.5% of all households of the Republic of Moldova, down 1.9 percentage points compared with 2021 (30.4%). A share of 51.9% of households with children are from rural areas.

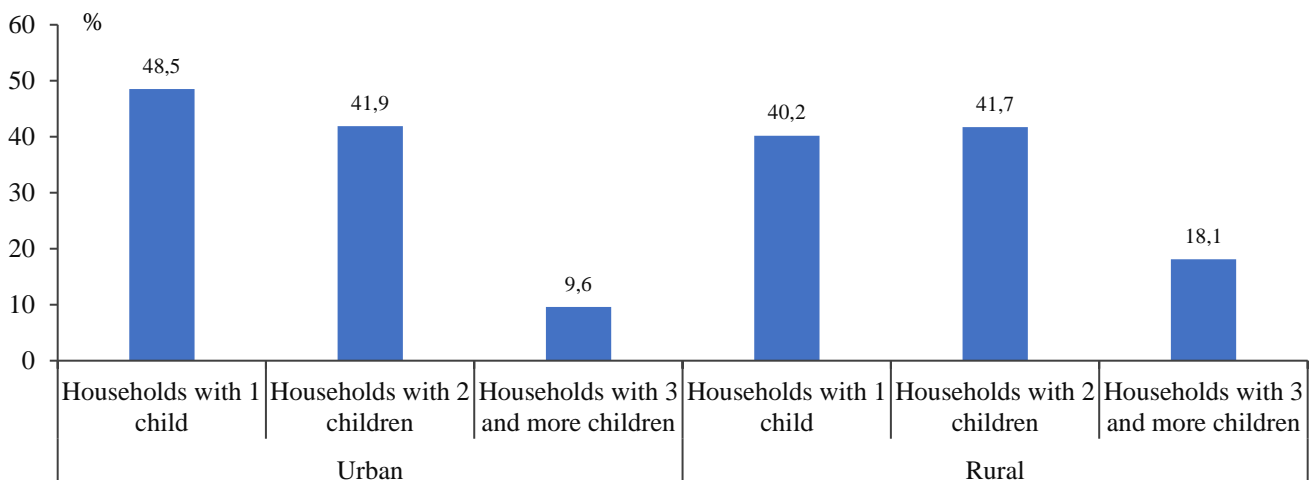
Households with one child remain predominant in the structure of households with children – 44.2% of the total households, followed by households with two children – 41.8%, and those with three or more children – 14.0% respectively. (Figure 1).

Figure 1. Household structure by presence of children and number of children, 2022, %



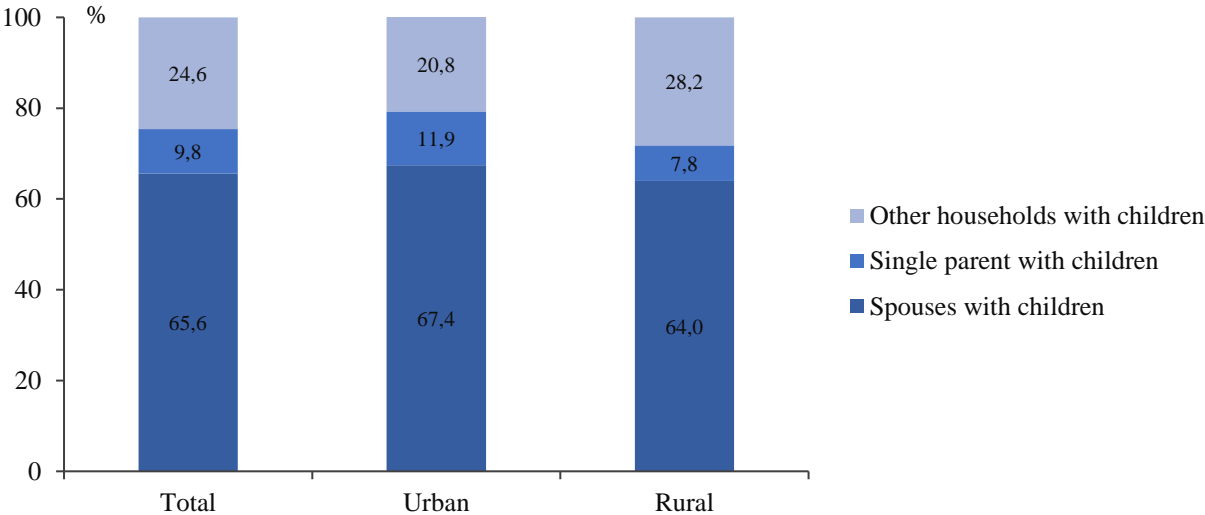
In urban areas, one in two households with children consists of only one child, while approximately one in ten – three or more children. In rural areas, households with two children have the highest share at 41.7%, followed by households with a single child at 40.2%. Households with three or more children account for 18.1% (Figure 2).

Figure 2. Distribution of households with children by number of the children and area of residence, 2022, %



Depending on the type of household, they are predominantly formed by family couples with children (65.6%) and households classified as “other households with children” which are cases of households formed by multiple family nuclei (24.6%). Single-parent households represent 9.8% of the total number of households with children. In urban areas the proportion of single-parent households is 4.1 percentage points higher than in rural areas. A similar situation is characteristic for family couples with children, which are more common in urban areas (with an increase of 3.4 percentage points). At the same time, in rural areas, there are more households classified as “other households with children” (Figure 3).

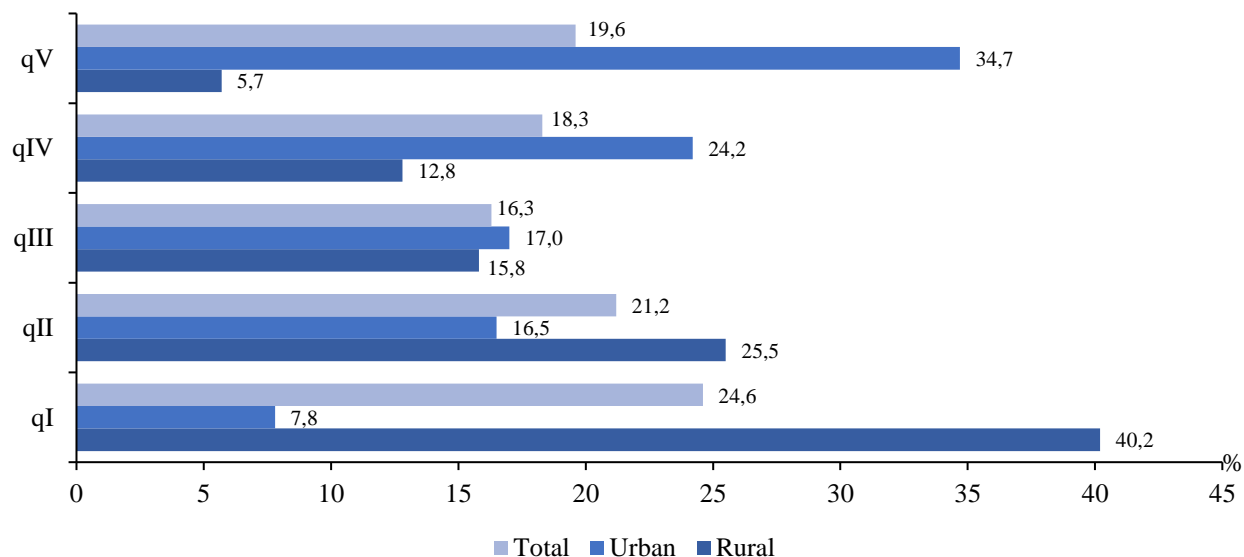
Figure 3. *Distribution of households with children by household type and area of residence, 2022, %*



The type and structure of households with children also determine the average household size. Thus, in 2022 the average size of a household with children was 3.9 people, with a difference between urban areas – 3.7 people and rural areas – 4.0 people.

The household size and the number of children in the household are determining factors for the level of vulnerability of both households in general and those with children. The distribution of households with children according to their level of well-being shows that the wealthier the quintile, the lower the number of households with children. Thus, 24.6% of households with children are in quintile I (20% of the least assured population), in comparison with 19.6% of households in quintile V (20% of the best assured population). The situation of urban households with children is different that of households in rural areas. While in urban areas the increase of households’ welfare determines the increase in the share of households with children from 7.8% for the households for quintile I to 34.7% for quintile V, the trend in rural areas is reversed. Of all rural households with children, 40.2% are in the category of the least assured, and only 5.7% belong to the category of the best assured (Figure 4).

Figure 4. *Distribution of households with children by quintile and area of residence, 2022, %*



Overall, a higher welfare level of households with children is mainly characteristic for households with one child (62.3%) and family couples with children (70.3%), and according to their residence, 85.0% of them are urban households. Furthermore, from all the least assured households with children, 84.8% live in rural area, 46,8% of them having 2 children. Another characteristic for these households is the fact that 60.4% are formed of family couples with children.

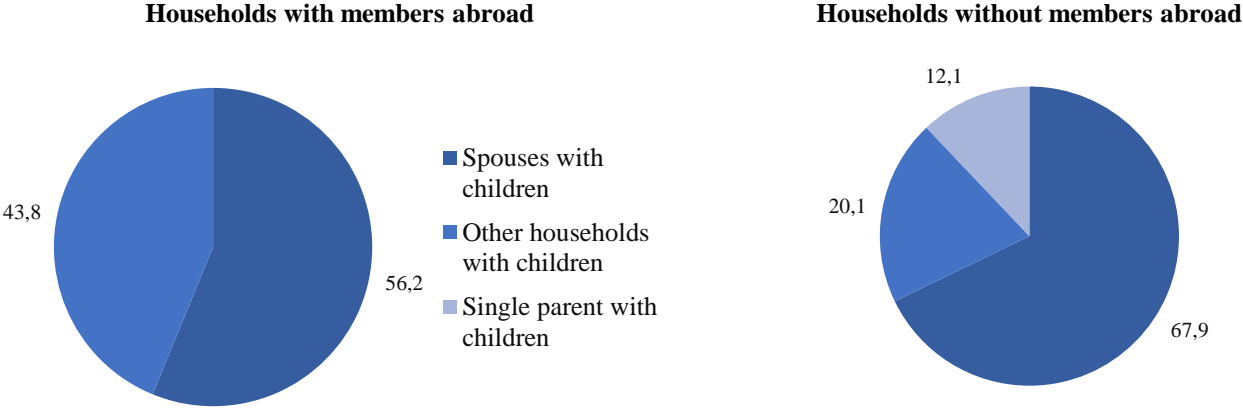
2. Households with children and members abroad

The migration phenomenon has a bigger impact on households with children. While almost 9.2% of all households have at least one member working or searching for a job abroad, in the case of households with children this share amounts to 19.1%. In the rural area the households with children and with at least one member abroad account for 23.4%, compared with 14.4% in the urban area. A share of 63.6% of households with children and members abroad are from rural areas.

In the structure of households with children and members abroad, households with a single child (44.4%) and those with 2 children (38.2%) predominate. A similar structure is found in the case of households with children and no members abroad.

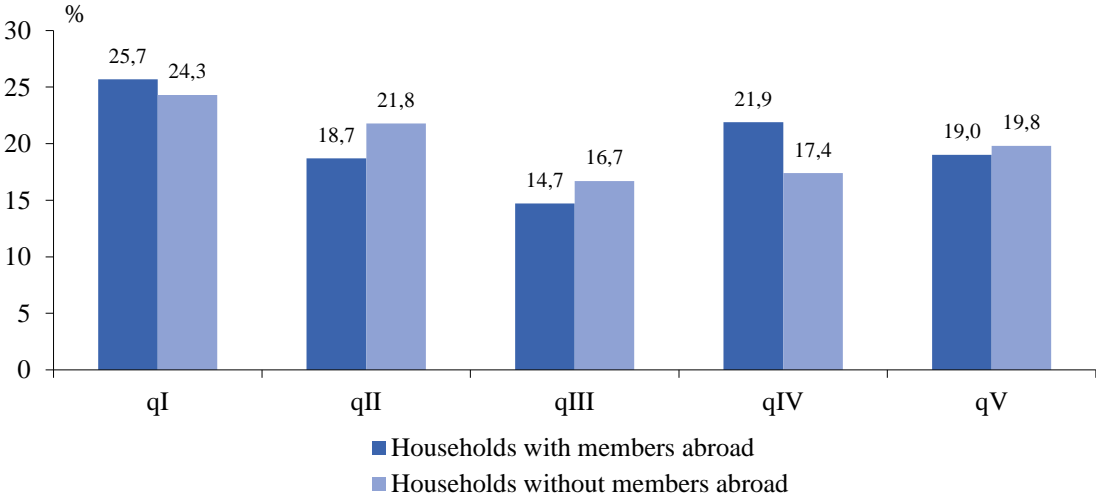
Depending on the type of the household, 56.2% of the households with children and members abroad are represented by family couples with children. The share of 43.8% of households with children and members abroad are represented by other households with children (households formed of several family nuclei). The structure of households with children and without members abroad is different. Practically two thirds of the households are represented by family couples with children (67.9%), followed by other households with children – 20.1% and single-parent households – 12.1% (Figure 5).

Figure 5. *Distribution of households with children by household type, with or without members abroad, 2022, %*



Depending on the welfare level of households with members abroad, we find that out of the total households with children, where at least one member is abroad, 25.7% belong to the least assured category (quintile I), while 24.3% of all households with children without members abroad are found in this quintile (Figure 6).

Figure 6. *Distribution of households with children by quintile, with or without members abroad, 2022, %*

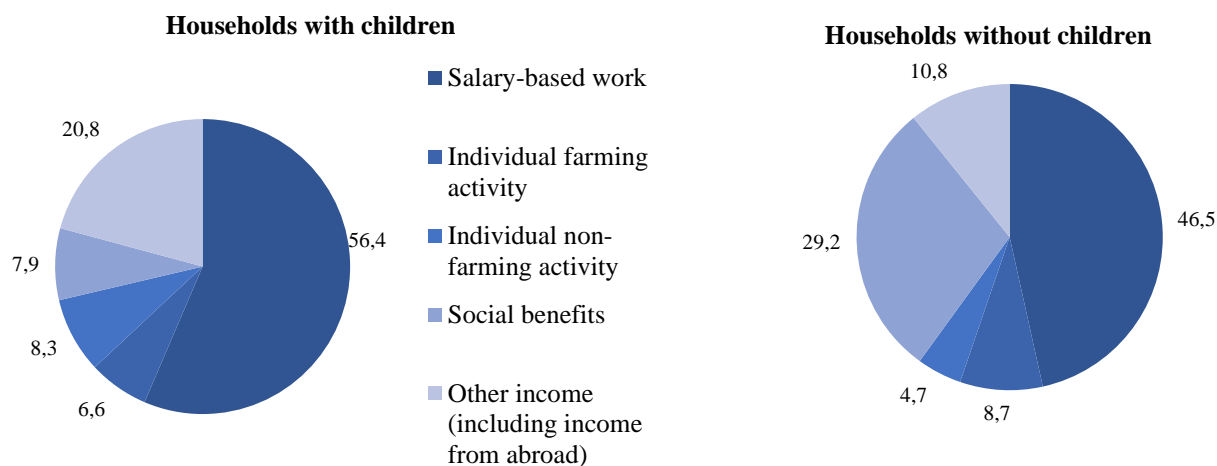


3. Income of households with children

The income of households determines not only their socio-economic status, but also their vulnerability level. Incomes of households with children are different in size and structure in comparison with the incomes earned by households without children. Incomes of households with children are substantially lower than the incomes of households without children. In 2022, the disposable income of households with children amounted to an average of MDL 3727.7 per person every month compared to MDL 4728.4 for households without children. Furthermore, the average disposable income per person for all the categories of households in the country constituted MDL 4252.6.

In households with children, the main income source is salary (56.4%), followed by income from individual non-farming activity (8.3%), social benefits (7.9%) and individual farming activity (6.6%). An important income source for households with children continues to be transfers from abroad, representing on average 16.9% of their income – by 8.3 percentage points higher than in the case of households without children (Figure 7).

Figure 7. Structure of disposable income, depending on presence of children, 2022, %

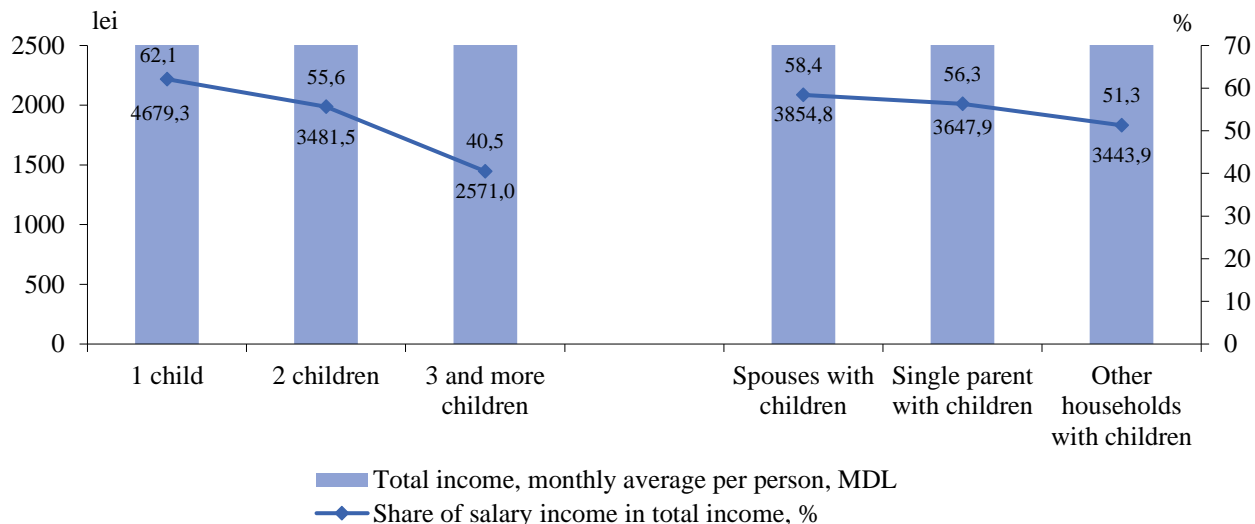


The level of income of households with children depends on several factors, including: area of residence, number of children, household type and quintile.

The area of residence is a key factor to determine the welfare level of households with children. The rural population is mainly involved in the agricultural sector which usually does not generate a decent income. As a result, the monthly income of rural households with children is by 37.8% lower than the income of urban households. In urban areas, about 64.3% of the income is generated by salaries, and 8.0% came from individual non-farming activities. At the same time, only 45.6% of the rural households' income is generated by salaries and 14.9% – from individual farming activity.

Depending on the number of children, households with one child are in a better situation with a monthly income of MDL 4679.3 per person in comparison with MDL 2571.0 in the case of households with three or more children. Regarding the type of household, it was found that the lowest income is characteristic for households made up of several family nuclei – MDL 3443.9 per person monthly (Figure 8).

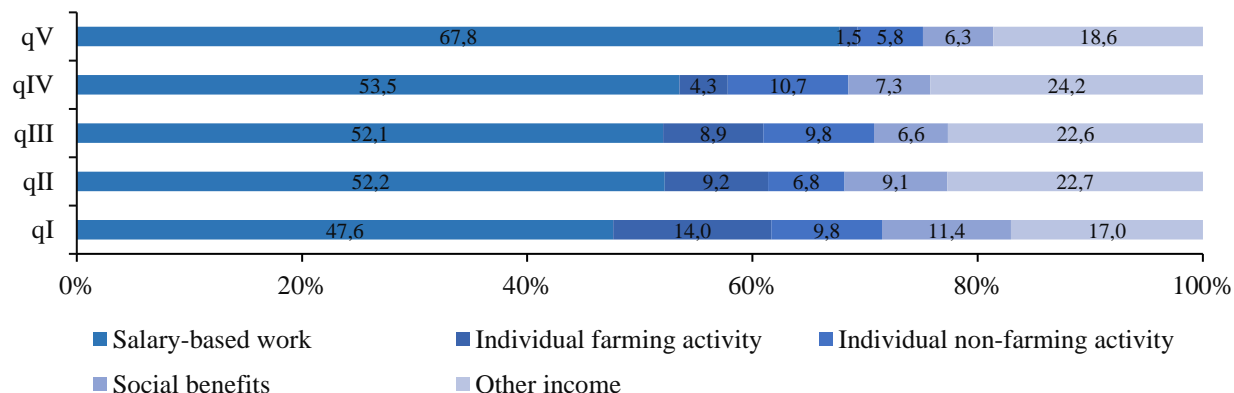
Figure 8. Average income of households with children by number of children and type of household, 2022



Regardless of the type of household, the main income source is salary, with a contribution ranging from 58.4% for family couples to 51.3% for households made up of several family nuclei. The contribution of salaries varies depending on the number of children in the household, from 62.1% for households with one child to 40.5% for those with three or more children (Figure 8). This could be explained by the fact that a significant proportion, around 67 percent, of large households (with three and more children) come from rural areas, where opportunities to earn additional income are limited.

The unequal distribution of the income of households with children is highlighted by their distribution in quintiles. Thus, in the case of households from the least assured category (quintile I) the average monthly income per person was MDL 2196.9 lei, which is about 3 times lower than the income of the best assured households (quintile V). The sources of income of households with children also differ significantly depending on the welfare level of the household. Salary contributes to the formation of income of the least assured category, only in proportion to around 48 percent, while the best assured households, have salary income accounting of about 68 percent. In the structure of income of households from quintile I, 14.0% is represented by individual farming activity, compared with 1.5% for households from quintile V. Social benefits are more important for households from the least assured category, amounting to 11.4% of total disposable income, by 5.1 percentage points more than in the case of the best assured households (Figure 9).

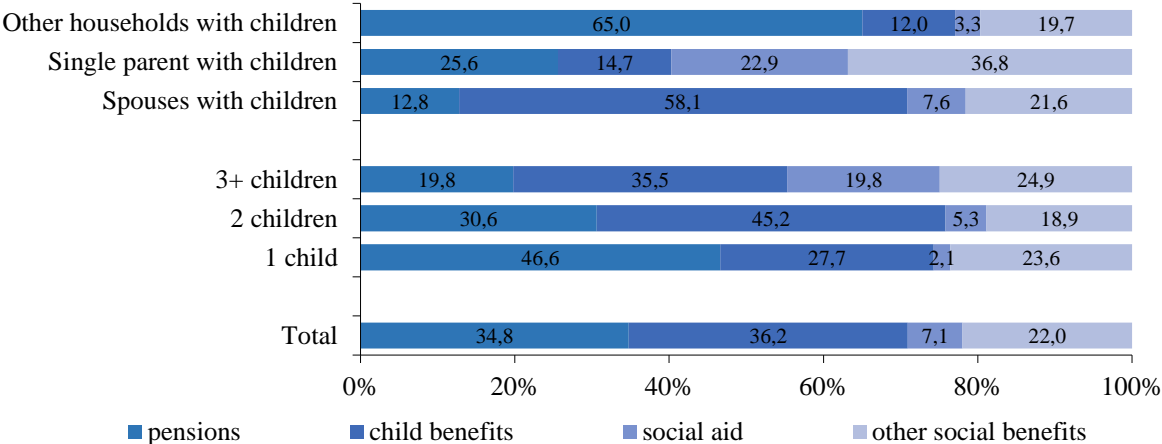
Figure 9. Structure of disposable income of households with children by quintiles, 2022, %



Households with children are less dependent on social benefits, in comparison with households without children. On average they account for 7.9% of the total income. A share of 35 percent of these benefits are formed on the basis of different types of pensions, 36.2% representing child benefits, 7.1% – social aid and the rest – other social payments (Figure 10).

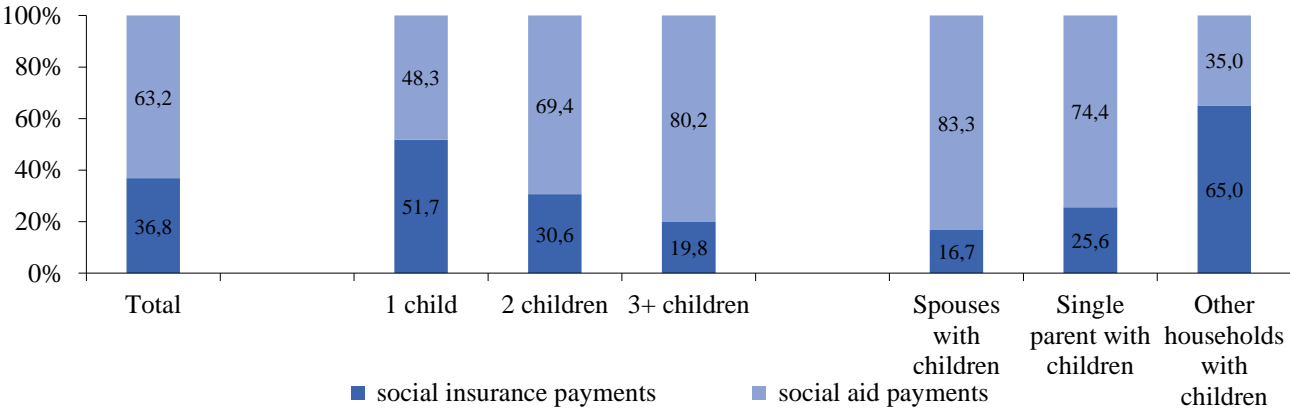
The social payments are more important for households with many children (12.2% of the total income), but also for households made up of several family nuclei (12.4%). At the same time, family couples with children benefit the most from child benefits (58.1%), while households with one child and those made up of several family nuclei benefit more from different types of pensions (Figure 10).

Figure 10. Structure of social benefits by source, depending on number of children and type of household, 2022, %



Of the total social benefits, about 37 percent represent social security benefits and 63 percent social assistance benefits. The more children in the household, the higher is the share of social assistance benefits in the structure of social benefits, growing from 48.3% for households with one child to 80.2% for households with three and more children. Depending on the type of the household, a higher dependence on social security benefits is registered among households made up of several family nuclei (65.0% of the total social benefits), and in the case of family couples and single parent households, the most important are the social assistance benefits (83.3% and 74.4%, respectively) (Figure 11).

Figure 11. Structure of social benefits by type, depending on the number of children and type of household, 2022, %



4. Child poverty

The absolute poverty rate for the total population and poverty among children fluctuated during 2020-2022. Given that in 2022 the absolute poverty rate of the overall population constituted 31.1%³, showing an increase of 6.6 percentage points compared to 2021, the child poverty rate was 28.4% (+4 percentage points compared to the previous year) (Figure 12). At the same time, 12.3% of children suffer from extreme poverty, compared to 13.5% of the total population (Figure 13).

Figure 12. Absolute poverty rate, 2020-2022, %

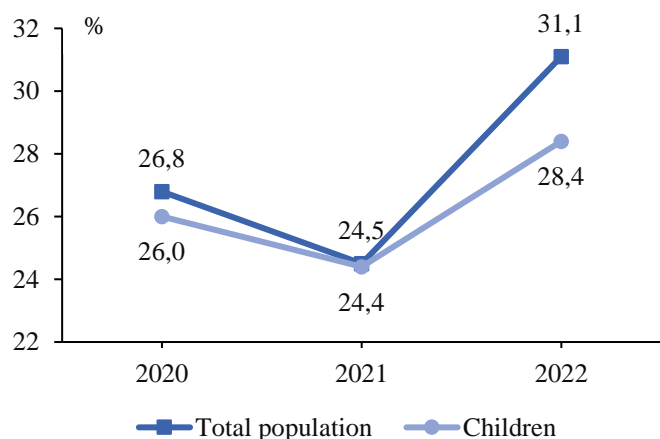
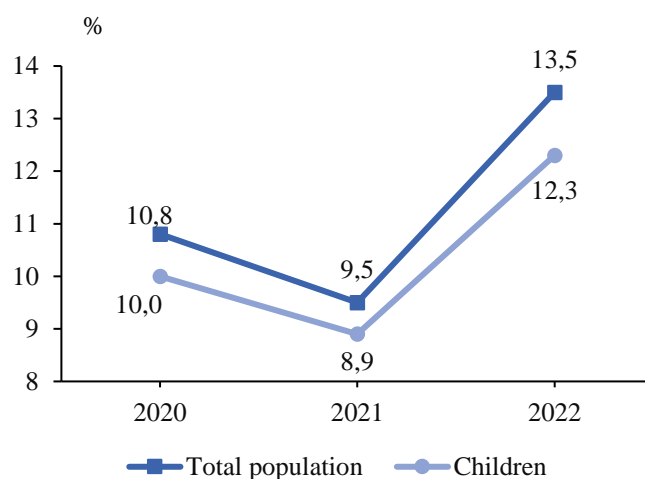
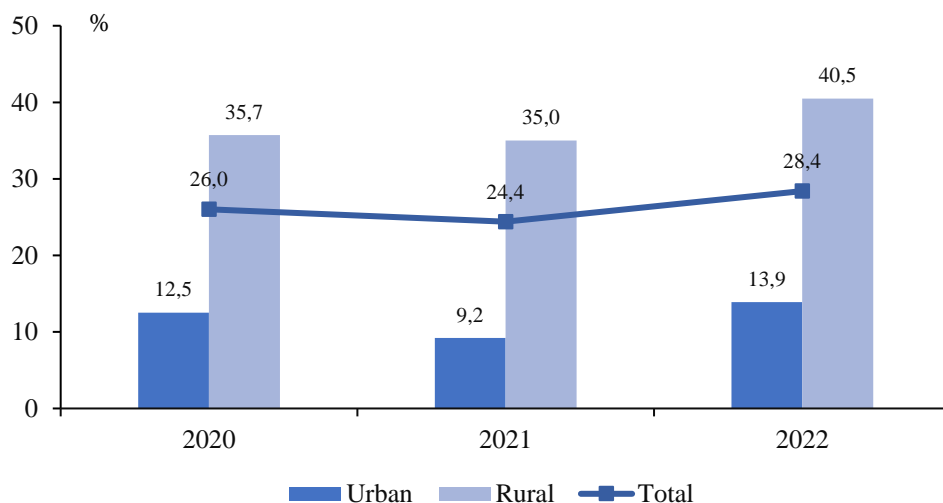


Figure 13. Extreme poverty rate, 2020-2022, %



Children's situation differs significantly depending on their area of residence. Children in rural areas are at a much higher risk of impoverishment than children in urban areas. Thus, the absolute poverty rate of rural children constituted 40.5% in 2022 compared to 13.9% in the case of urban children. At the same time, the child poverty rate increased by 4.7 percentage points compared to the previous year in urban area, and by 5.5 percentage points in the rural area (Figure 14).

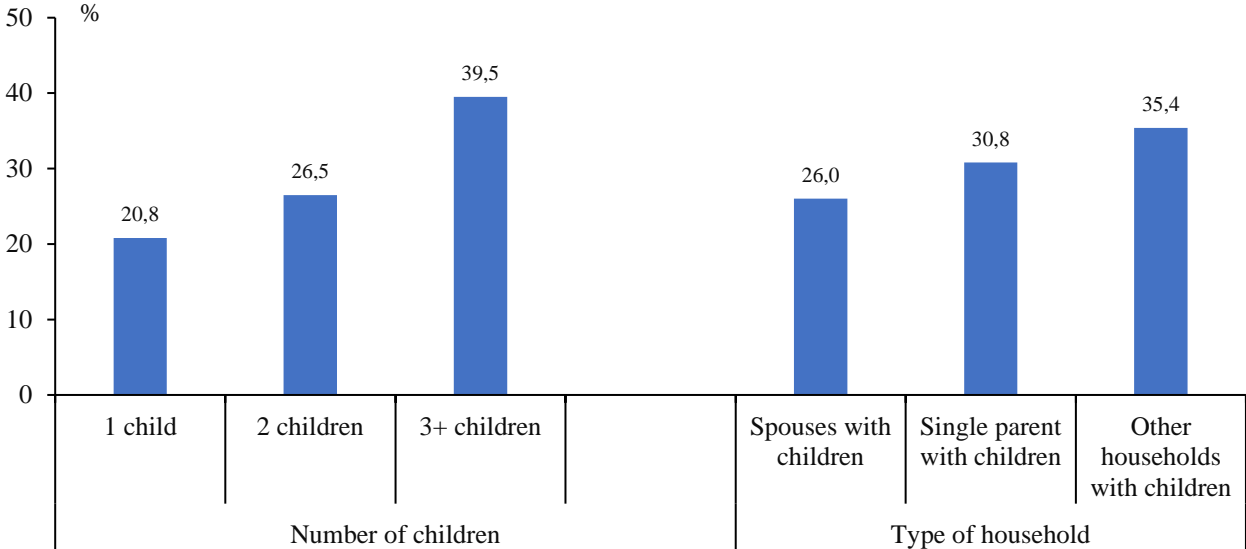
Figure 14. Absolute poverty rate among children by area of residence, 2020-2022, %



³ The poverty indicators were calculated according to the revised methodology approved by the Order of Director General of the National Bureau of Statistics No 56 of 24 August 2018, supplemented by NBS Order No 15 of 2 July 2020
https://statistica.gov.md/public/files/Metadate/alte/Metodologie_saracie.pdf

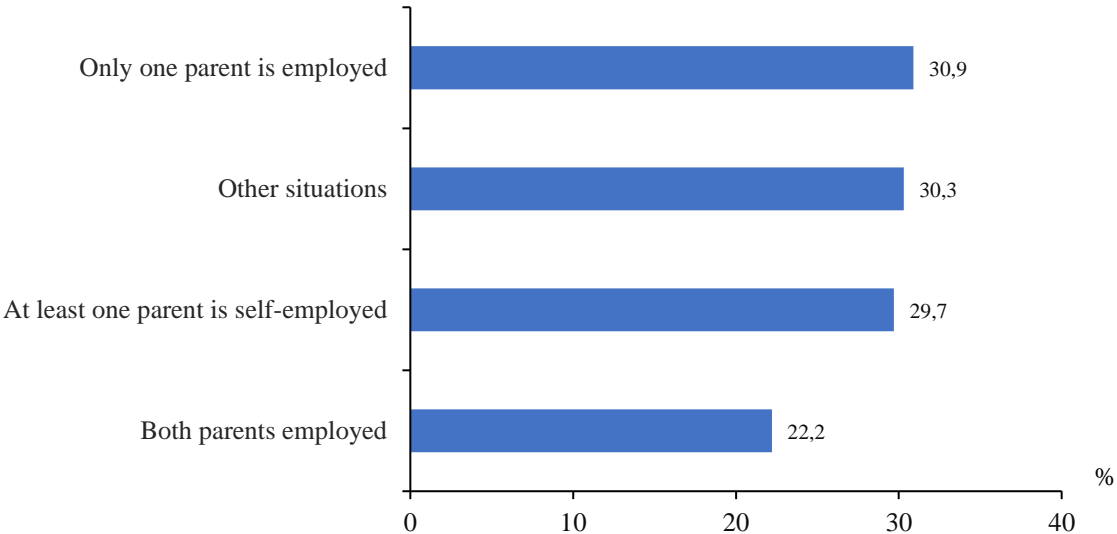
Household's features like the number of children and type of households also determine the vulnerability level of households with children. The risk of families with children entering poverty increases considerably with the birth of the next child. Thus, in 2022 households with three and more children registered the highest poverty rate (39.5%), while households with one child registered the lowest one (20.8%). Depending on the type of the household, children from households made up of several family nuclei face the highest risk of entering poverty (35.4%), since this type of households prevails in rural areas where the poverty incidence is generally higher (Figure 15).

Figure 15. Absolute poverty rate among children by the number of children and type of household, 2022, %



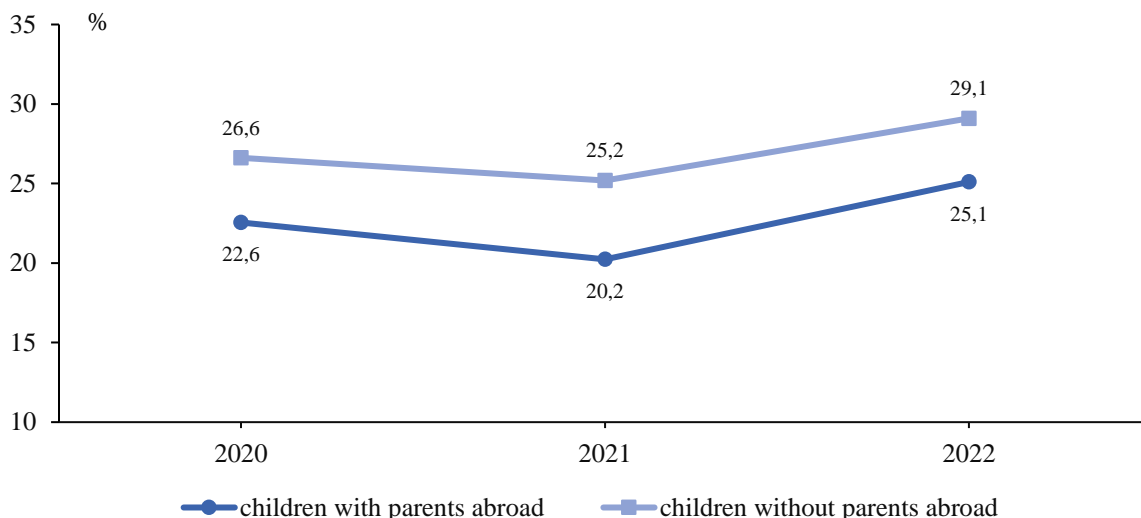
The occupational status of parents is one of the main factors that determine child welfare. The employment of parents diminishes essentially the probability of children entering poverty. Thus, the lowest poverty rate is registered in the case of children with both parents employed (22.2%), followed by children with at least one self-employed parent (29.7%). The highest level of poverty is recorded in the case of children from households with only one parent employed (30.9%) (Figure 16).

Figure 16. Absolute poverty rate among children depending on parents' occupational status, 2022, %



Overall, 17.7% of all children have parents left for abroad. In families where at least one parent left for abroad, the child's financial situation is better than in families with no parents abroad. Thus, in 2022 the poverty level of children with at least one parent abroad was by 4 percentage points lower than in the case of children with both parents at home (29.1%). At the same time, compared to the previous year, the poverty rate of children without parents abroad increased by 3.9 percentage points, compared to 4.9 percentage points for children with parents abroad (Figure 17).

Figure 17. Absolute poverty rate among children with or without parents abroad, 2020-2022, %



5. Impact of social benefits on child poverty rate

The impact of social benefits on the poverty rate is analysed by including or excluding them from the household income. Thus, if households did not receive child benefits, the absolute poverty rate would have constituted 31.8%, which is by 3.4 percentage points higher than the poverty rate according to the current estimates. Pensions have a slightly lower impact on the level of children's welfare, contributing to poverty reduction by 3.3 percentage points.

Table 1. Impact of social benefits on the absolute poverty rate among children, 2022

	Absolute poverty rate, %		Difference, percentage points
	without social benefits	with social benefits (current situation)	
Child benefits	31.8	28.4	3.4
Pensions	31.7	28.4	3.3
Social aid	29.7	28.4	1.3
Child benefits and social aid	33.2	28.4	4.8

Analysing the impact of child benefits and social aid on child poverty, we can state that they both contributed to the reduction of poverty rate by 4.8 percentage points in 2022.

ANNEX

Table 1. Main characteristics of households with children, by area of residence, 2019-2022

Annex

	percent											
	2019			2020			2021			2022		
	Area of residence		Total	Area of residence		Total	Area of residence		Total	Area of residence		Total
	Urban	Rural		Urban	Rural		Urban	Rural		Urban	Rural	
Type of household												
Households with children	34,7	29,5	31,6	33,9	29,2	31,1	33,9	28,0	30,4	36,4	23,7	28,5
Households without children	65,3	70,5	68,4	66,1	70,8	68,9	66,1	72,0	69,6	63,6	76,3	71,5
Total	100,0	100,0	100,0	100,0	100,0	100,0	100,0	100,0	100,0	100,0	100,0	100,0
Number of children under 18												
Households with 1 child	50,2	44,6	47,1	52,0	46,7	49,0	52,9	45,6	48,8	48,5	40,2	44,2
Households with 2 children	39,8	39,2	39,5	38,0	36,4	37,1	37,9	36,5	37,1	41,9	41,7	41,8
Households with 3 and more children	9,9	16,2	13,4	10,0	16,9	13,9	9,2	17,9	14,0	9,6	18,1	14,0
Total	100,0	100,0	100,0	100,0	100,0	100,0	100,0	100,0	100,0	100,0	100,0	100,0
Type of household with children under 18												
Spouses with children	72,4	56,0	63,3	66,9	58,7	62,3	66,4	60,2	62,9	67,4	64,0	65,6
Single parent with children	10,3	5,5	7,6	10,1	6,3	8,0	9,3	4,4	6,6	11,9	7,8	9,8
Other households with children	17,2	38,5	29,1	23,0	35,0	29,7	24,3	35,4	30,5	20,8	28,2	24,6
Total	100,0	100,0	100,0	100,0	100,0	100,0	100,0	100,0	100,0	100,0	100,0	100,0
Type of households with children and persons abroad												
Households with children and persons abroad	10,6	25,4	18,9	11,9	19,1	15,9	10,9	19,6	15,8	14,4	23,4	19,1
Households with children and no persons abroad	89,4	74,6	81,1	88,1	80,9	84,1	89,1	80,4	84,2	85,6	76,6	80,9
Total	100,0	100,0	100,0	100,0	100,0	100,0	100,0	100,0	100,0	100,0	100,0	100,0
Quintiles (consumption expenses)												
1	8,7	34,6	23,2	10,7	34,9	24,3	8,5	36,6	24,2	7,8	40,2	24,6
2	14,9	22,8	19,3	14,3	27,0	21,4	14,2	26,5	21,1	16,5	25,5	21,2
3	22,3	20,9	21,5	18,5	18,6	18,5	20,1	17,5	18,6	17,0	15,8	16,3
4	22,9	13,7	17,8	23,9	13,8	18,2	25,0	12,2	17,9	24,2	12,8	18,3
5	31,2	8,1	18,2	32,7	5,7	17,6	32,2	7,2	18,3	34,7	5,7	19,6
Total	100,0	100,0	100,0	100,0	100,0	100,0	100,0	100,0	100,0	100,0	100,0	100,0
Average size of households with children (persons)	3,7	4,2	3,9	3,7	4,0	3,9	3,7	4,1	3,9	3,7	4,0	3,9

Table 2. Main characteristics of households with children, by area of residence, 2019-2022

	<i>percent</i>											
	2019			2020			2021			2022		
	Area of residence		Total	Area of residence		Total	Area of residence		Total	Area of residence		Total
Urban	Rural	Urban		Rural	Urban		Rural	Urban		Rural		
Type of household												
Households with children	44,1	55,9	100,0	44,0	56,0	100,0	44,2	55,8	100,0	48,1	51,9	100,0
Households without children	38,3	61,7	100,0	38,7	61,3	100,0	37,6	62,4	100,0	33,5	66,5	100,0
Total	40,1	59,9	100,0	40,4	59,6	100,0	39,6	60,4	100,0	37,7	62,3	100,0
Number of children under 18												
Households with 1 child	47,0	53,0	100,0	46,7	53,3	100,0	47,9	52,1	100,0	52,8	47,2	100,0
Households with 2 children	44,5	55,5	100,0	45,0	55,0	100,0	45,1	54,9	100,0	48,2	51,8	100,0
Households with 3 and more children	32,5	67,5	100,0	31,8	68,2	100,0	28,9	71,1	100,0	33,1	66,9	100,0
Total	44,1	55,9	100,0	44,0	56,0	100,0	44,2	55,8	100,0	48,1	51,9	100,0
Type of household with children under 18												
Spouses with children	50,5	49,5	100,0	47,2	52,8	100,0	46,7	53,3	100,0	49,4	50,6	100,0
Single parent with children	59,8	40,2	100,0	55,5	44,5	100,0	62,6	37,4	100,0	58,6	41,4	100,0
Other households with children	26,1	73,9	100,0	34,1	65,9	100,0	35,2	64,8	100,0	40,6	59,4	100,0
Total	44,1	55,9	100,0	44,0	56,0	100,0	44,2	55,8	100,0	48,1	51,9	100,0
Type of households with children and persons abroad												
Households with children and persons abroad	24,8	75,2	100,0	32,9	67,1	100,0	30,5	69,5	100,0	36,4	63,6	100,0
Households with children and no persons abroad	48,6	51,4	100,0	46,1	53,9	100,0	46,8	53,2	100,0	50,9	49,1	100,0
Total	44,1	55,9	100,0	44,0	56,0	100,0	44,2	55,8	100,0	48,1	51,9	100,0
Quintiles (consumption expenses)												
1	16,6	83,4	100,0	19,3	80,7	100,0	15,5	84,5	100,0	15,2	84,8	100,0
2	34,0	66,0	100,0	29,4	70,6	100,0	29,9	70,1	100,0	37,5	62,5	100,0
3	45,8	54,2	100,0	43,8	56,2	100,0	47,7	52,3	100,0	49,9	50,1	100,0
4	56,8	43,2	100,0	57,6	42,4	100,0	61,8	38,2	100,0	63,7	36,3	100,0
5	75,3	24,7	100,0	81,9	18,1	100,0	78,0	22,0	100,0	85,0	15,0	100,0
Total	44,1	55,9	100,0	44,0	56,0	100,0	44,2	55,8	100,0	48,1	51,9	100,0

Table 3. Breakdown of households with children, by quintile, by number of children and by type of household, 2019-2022

	2019						2020						<i>percent</i>
	Quintiles (consumption expenses)					Total	Quintiles (consumption expenses)					Total	
	1	2	3	4	5		1	2	3	4	5		
Number of children under 18													
Households with 1 child	33,6	39,5	50,5	55,2	60,2	47,1	33,2	45,7	50,0	58,6	64,1	49,0	
Households with 2 children	40,4	47,5	36,2	37,9	35,1	39,5	36,8	41,1	39,9	36,8	30,0	37,1	
Households with 3 and more children	26,0	13,0	13,3	6,9	4,7	13,4	30,1	13,2	10,2	4,6	5,9	13,9	
Total	100,0	100,0	100,0	100,0	100,0	100,0	100,0	100,0	100,0	100,0	100,0	100,0	
Type of household with children under 18													
Spouses with children	54,4	60,4	59,0	66,7	79,2	63,3	57,2	58,2	61,1	66,1	71,7	62,3	
Single parent with children	6,3	5,8	10,8	8,1	6,8	7,6	8,1	6,7	5,9	9,0	10,6	8,0	
Other households with children	39,3	33,8	30,1	25,2	14,0	29,1	34,8	35,1	33,1	24,8	17,7	29,7	
Total	100,0	100,0	100,0	100,0	100,0	100,0	100,0	100,0	100,0	100,0	100,0	100,0	
Type of households with children and persons abroad													
Households with children and persons abroad	17,3	21,0	18,4	20,6	17,7	18,9	15,9	13,7	14,7	15,8	20,1	15,9	
Households with children and no persons abroad	82,7	79,0	81,6	79,4	82,3	81,1	84,1	86,3	85,3	84,2	79,9	84,1	
Total	100,0	100,0	100,0	100,0	100,0	100,0	100,0	100,0	100,0	100,0	100,0	100,0	
	2021						2022						
	Quintiles (consumption expenses)					Total	Quintiles (consumption expenses)					Total	
	1	2	3	4	5		1	2	3	4	5		
Number of children under 18													
Households with 1 child	34,0	45,8	52,1	51,8	65,7	48,8	26,0	40,6	43,3	54,3	62,3	44,2	
Households with 2 children	37,5	41,4	37,3	37,7	30,9	37,1	46,8	45,5	45,6	38,1	31,9	41,8	
Households with 3 and more children	28,4	12,8	10,6	10,5	3,4	14,0	27,3	13,9	11,2	7,6	5,9	14,0	
Total	100,0	100,0	100,0	100,0	100,0	100,0	100,0	100,0	100,0	100,0	100,0	100,0	
Type of household with children under 18													
Spouses with children	54,8	59,7	61,4	70,0	72,1	62,9	60,4	64,6	63,8	70,5	70,3	65,6	
Single parent with children	5,8	6,8	3,9	6,2	10,4	6,6	10,5	9,0	6,4	7,3	14,6	9,8	
Other households with children	39,3	33,5	34,7	23,8	17,6	30,5	29,0	26,4	29,8	22,1	15,1	24,6	
Total	100,0	100,0	100,0	100,0	100,0	100,0	100,0	100,0	100,0	100,0	100,0	100,0	
Type of households with children and persons abroad													
Households with children and persons abroad	14,2	15,7	18,6	15,6	15,3	15,8	20,0	16,8	17,2	22,9	18,4	19,1	
Households with children and no persons abroad	85,8	84,3	81,4	84,4	84,7	84,2	80,0	83,2	82,8	77,1	81,6	80,9	
Total	100,0	100,0	100,0	100,0	100,0	100,0	100,0	100,0	100,0	100,0	100,0	100,0	

Table 4. Breakdown of households with children, by quintile, by number of children and by type of household, 2019-2022

	2019						2020						<i>percent</i>
	Quintiles (consumption expenses)					Total	Quintiles (consumption expenses)					Total	
	1	2	3	4	5		1	2	3	4	5		
Number of children under 18													
Households with 1 child	16,5	16,2	23,1	20,8	23,3	100,0	16,4	20,0	18,9	21,8	22,9	100,0	
Households with 2 children	23,7	23,3	19,7	17,1	16,2	100,0	24,0	23,8	19,9	18,1	14,2	100,0	
Households with 3 and more children	44,8	18,6	21,2	9,1	6,4	100,0	52,6	20,4	13,6	6,0	7,4	100,0	
Total	23,2	19,3	21,5	17,8	18,2	100,0	24,3	21,4	18,5	18,2	17,6	100,0	
Type of household with children under 18													
Spouses with children	19,9	18,4	20,1	18,7	22,8	100,0	22,3	20,0	18,2	19,3	20,2	100,0	
Single parent with children	19,1	14,8	30,7	19,0	16,4	100,0	24,5	17,9	13,6	20,6	23,3	100,0	
Other households with children	31,2	22,4	22,2	15,3	8,8	100,0	28,4	25,3	20,6	15,2	10,4	100,0	
Total	23,2	19,3	21,5	17,8	18,2	100,0	24,3	21,4	18,5	18,2	17,6	100,0	
Type of households with children and persons abroad													
Households with children and persons abroad	21,2	21,5	20,9	19,3	17,1	100,0	24,3	18,4	17,1	18,1	22,2	100,0	
Households with children and no persons abroad	23,6	18,8	21,6	17,4	18,5	100,0	24,3	22,0	18,8	18,3	16,7	100,0	
Total	23,2	19,3	21,5	17,8	18,2	100,0	24,3	21,4	18,5	18,2	17,6	100,0	
	2021						2022						
	Quintiles (consumption expenses)					Total	Quintiles (consumption expenses)					Total	
	1	2	3	4	5		1	2	3	4	5		
Number of children under 18													
Households with 1 child	16,9	19,7	19,9	18,9	24,6	100,0	14,5	19,5	16,0	22,4	27,7	100,0	
Households with 2 children	24,4	23,5	18,7	18,2	15,2	100,0	27,5	23,1	17,8	16,7	15,0	100,0	
Households with 3 and more children	49,0	19,1	14,1	13,4	4,4	100,0	47,9	21,0	13,0	9,9	8,2	100,0	
Total	24,2	21,1	18,6	17,9	18,3	100,0	24,6	21,2	16,3	18,3	19,6	100,0	
Type of household with children under 18													
Spouses with children	21,1	20,0	18,2	19,9	20,9	100,0	22,6	20,8	15,9	19,6	21,0	100,0	
Single parent with children	21,5	21,9	10,9	16,9	28,8	100,0	26,5	19,6	10,7	13,8	29,5	100,0	
Other households with children	31,2	23,1	21,2	13,9	10,5	100,0	29,0	22,8	19,8	16,4	12,0	100,0	
Total	24,2	21,1	18,6	17,9	18,3	100,0	24,6	21,2	16,3	18,3	19,6	100,0	
Type of households with children and persons abroad													
Households with children and persons abroad	21,7	20,9	22,0	17,6	17,7	100,0	25,7	18,7	14,7	21,9	19,0	100,0	
Households with children and no persons abroad	24,6	21,1	18,0	17,9	18,4	100,0	24,3	21,8	16,7	17,4	19,8	100,0	
Total	24,2	21,1	18,6	17,9	18,3	100,0	24,6	21,2	16,3	18,3	19,6	100,0	

Table 5. Structure of households with children, by type of household, by number of children in the household and by quintile, 2019-2022

	percent											
	2019			2020			2021			2022		
	Type of households with children and persons abroad		Total	Type of households with children and persons abroad		Total	Type of households with children and persons abroad		Total	Type of households with children and persons abroad		Total
Households with children and persons abroad	Households with children and no persons abroad	Households with children and persons abroad		Households with children and no persons abroad	Households with children and persons abroad		Households with children and no persons abroad	Households with children and persons abroad		Households with children and no persons abroad		
Number of children under 18												
Households with 1 child	45,4	47,5	47,1	48,2	49,2	49,0	45,2	49,5	48,8	44,4	44,2	44,2
Households with 2 children	41,8	38,9	39,5	37,1	37,1	37,1	37,9	37,0	37,1	38,2	42,7	41,8
Households with 3 and more children	12,8	13,6	13,4	14,7	13,7	13,9	16,8	13,5	14,0	17,5	13,2	14,0
Total	100,0	100,0	100,0	100,0	100,0	100,0	100,0	100,0	100,0	100,0	100,0	100,0
Type of household with children under 18												
Spouses with children	53,3	65,6	63,3	58,3	63,1	62,3	59,2	63,7	62,9	56,2	67,9	65,6
Single parent with children	-	9,4	7,6	0,4	9,4	8,0	-	7,8	6,6	-	12,1	9,8
Other households with children	46,7	25,0	29,1	41,4	27,5	29,7	40,8	28,5	30,5	43,8	20,1	24,6
Total	100,0	100,0	100,0	100,0	100,0	100,0	100,0	100,0	100,0	100,0	100,0	100,0
Quintiles (consumption expenses)												
1	21,2	23,6	23,2	24,3	24,3	24,3	21,7	24,6	24,2	25,7	24,3	24,6
2	21,5	18,8	19,3	18,4	22,0	21,4	20,9	21,1	21,1	18,7	21,8	21,2
3	20,9	21,6	21,5	17,1	18,8	18,5	22,0	18,0	18,6	14,7	16,7	16,3
4	19,3	17,4	17,8	18,1	18,3	18,2	17,6	17,9	17,9	21,9	17,4	18,3
5	17,1	18,5	18,2	22,2	16,7	17,6	17,7	18,4	18,3	19,0	19,8	19,6
Total	100,0	100,0	100,0	100,0	100,0	100,0	100,0	100,0	100,0	100,0	100,0	100,0

Table 6. Structure of households with children, by type of household, by number of children in the household and by quintile, 2019-2022

	percent											
	2019			2020			2021			2022		
	Type of households with children and persons abroad		Total	Type of households with children and persons abroad		Total	Type of households with children and persons abroad		Total	Type of households with children and persons abroad		Total
Households with children and persons abroad	Households with children and no persons abroad	Households with children and persons abroad		Households with children and no persons abroad	Households with children and persons abroad		Households with children and no persons abroad	Households with children and persons abroad		Households with children and no persons abroad		
Number of children under 18												
Households with 1 child	18,2	81,8	100,0	15,7	84,3	100,0	14,6	85,4	100,0	19,1	80,9	100,0
Households with 2 children	20,0	80,0	100,0	15,9	84,1	100,0	16,1	83,9	100,0	17,4	82,6	100,0
Households with 3 and more children	18,0	82,0	100,0	16,9	83,1	100,0	18,9	81,1	100,0	23,8	76,2	100,0
Total	18,9	81,1	100,0	15,9	84,1	100,0	15,8	84,2	100,0	19,1	80,9	100,0
Type of household with children under 18												
Spouses with children	15,9	84,1	100,0	14,9	85,1	100,0	14,8	85,2	100,0	16,3	83,7	100,0
Single parent with children	-	100,0	100,0	0,7	99,3	100,0	-	100,0	100,0	-	100,0	100,0
Other households with children	30,3	69,7	100,0	22,2	77,8	100,0	21,1	78,9	100,0	34,0	66,0	100,0
Total	18,9	81,1	100,0	15,9	84,1	100,0	15,8	84,2	100,0	19,1	80,9	100,0
Quintiles (consumption expenses)												
1	17,3	82,7	100,0	15,9	84,1	100,0	14,2	85,8	100,0	20,0	80,0	100,0
2	21,0	79,0	100,0	13,7	86,3	100,0	15,7	84,3	100,0	16,8	83,2	100,0
3	18,4	81,6	100,0	14,7	85,3	100,0	18,6	81,4	100,0	17,2	82,8	100,0
4	20,6	79,4	100,0	15,8	84,2	100,0	15,6	84,4	100,0	22,9	77,1	100,0
5	17,7	82,3	100,0	20,1	79,9	100,0	15,3	84,7	100,0	18,4	81,6	100,0
Total	18,9	81,1	100,0	15,9	84,1	100,0	15,8	84,2	100,0	19,1	80,9	100,0

Table 7. Structure of disposable income, by type of household, 2019-2022

	2019		2020		2021		2022	
	Type of household		Type of household		Type of household		Type of household	
	Households with children	Households without children	Households with children	Households without children	Households with children	Households without children	Households with children	Households without children
Disposable income (monthly average per capita), MDL <i>including in % by sources:</i>	2449,1	3320,4	2615,9	3585,7	3005,0	4011,9	3727,7	4728,4
Salary-based work	53,5	47,7	54,5	47,1	55,0	47,6	56,4	46,5
Individual farming activity	8,2	9,4	8,3	8,4	7,7	8,4	6,6	8,7
Individual non-farming activity	7,9	5,0	8,2	4,9	10,0	5,4	8,3	4,7
Property income	0,3	0,3	0,4	0,0	0,5	0,0	0,1	0,3
Social benefits	9,2	25,8	8,9	27,1	9,2	25,5	7,9	29,2
pensions	3,6	22,5	3,0	23,0	3,3	21,9	2,7	25,1
child benefits	3,3	-	3,1	-	3,3	-	2,8	-
social aid	0,6	0,3	0,9	0,4	0,9	0,3	0,6	0,2
Other income	20,9	11,7	19,7	12,5	17,5	13,0	20,7	10,5
remittances from abroad	16,8	9,0	16,7	10,1	14,8	10,9	16,9	8,6

Table 8. Structure of disposable income, by type of household and by area of residence, 2019-2022

	2019				2020			
	Type of household				Type of household			
	Households with children		Households without children		Households with children		Households without children	
	Area of residence		Area of residence		Area of residence		Area of residence	
	Urban	Rural	Urban	Rural	Urban	Rural	Urban	Rural
Disposable income (monthly average per capita), MDL	3027,3	2033,5	4081,4	2860,3	3113,2	2258,2	4354,6	3123,1
<i>including in % by sources:</i>								
Salary-based work	65,6	40,5	60,7	36,5	64,5	44,5	58,1	37,8
Individual farming activity	0,7	16,3	0,8	16,9	0,8	15,8	0,7	14,8
Individual non-farming activity	8,0	7,8	4,7	5,3	8,5	7,8	4,9	4,9
Property income	0,3	0,3	0,4	0,3	0,9	0,0	0,0	-
Social benefits	8,1	10,4	24,1	27,3	8,6	9,2	25,4	28,5
pensions	2,6	4,7	22,5	22,6	2,6	3,5	23,0	23,1
child benefits	4,1	2,4	-	-	4,3	2,0	-	-
social aid	0,0	1,1	0,1	0,5	0,4	1,4	0,1	0,6
Other income	17,3	24,8	9,3	13,7	16,7	22,7	10,9	13,9
remittances from abroad	11,7	22,4	5,9	11,6	12,2	21,2	7,2	12,5
	2021				2022			
	Type of household				Type of household			
	Households with children		Households without children		Households with children		Households without children	
	Area of residence		Area of residence		Area of residence		Area of residence	
	Urban	Rural	Urban	Rural	Urban	Rural	Urban	Rural
Disposable income (monthly average per capita), MDL	3705,5	2502,7	4975,3	3431,9	4680,0	2911,6	6192,5	3982,7
<i>including in % by sources:</i>								
Salary-based work	65,6	43,8	59,2	37,5	64,3	45,6	58,1	37,4
Individual farming activity	0,3	15,6	0,7	15,1	0,6	14,9	0,6	15,2
Individual non-farming activity	10,5	9,5	6,1	4,8	8,0	8,8	5,8	3,9
Property income	1,0	0,0	0,1	-	0,2	-	0,5	0,0
Social benefits	8,1	10,3	22,5	28,1	7,3	8,6	25,7	32,0
pensions	2,7	4,1	20,3	23,3	2,7	2,7	22,8	26,8
child benefits	4,2	2,3	-	-	3,5	2,0	-	-
social aid	0,3	1,5	0,1	0,5	0,1	1,2	0,1	0,2
Other income	14,5	20,7	11,3	14,6	19,7	22,1	9,4	11,5
remittances from abroad	10,9	18,9	8,3	13,1	14,7	20,1	6,4	10,3

Table 9. Structure of disposable income of households with children, by number of children in the household, 2019-2022

	2019			2020			2021			2022		
	Number of children under 18			Number of children under 18			Number of children under 18			Number of children under 18		
	Households with 1 child	Households with 2 children	Households with 3 and more children	Households with 1 child	Households with 2 children	Households with 3 and more children	Households with 1 child	Households with 2 children	Households with 3 and more children	Households with 1 child	Households with 2 children	Households with 3 and more children
Disposable income (monthly average per capita), MDL <i>including in % by sources:</i>	2939,2	2360,6	1679,6	3053,0	2557,2	1844,1	3568,1	2910,5	2034,7	4679,3	3481,5	2571,0
Salary-based work	58,2	52,1	41,2	56,9	57,0	39,2	59,2	55,5	38,3	62,1	55,6	40,5
Individual farming activity	7,4	7,8	12,6	8,8	7,1	10,0	7,9	6,9	9,5	6,3	6,6	7,7
Individual non-farming activity	5,9	9,2	11,0	6,4	7,5	15,9	8,2	11,1	13,3	6,8	9,2	10,4
Property income	0,4	0,1	-	0,9	0,0	-	0,2	1,1	0,1	0,1	0,2	-
Social benefits	9,2	8,2	12,5	8,0	8,2	13,7	8,8	7,3	15,9	7,1	7,3	12,2
pensions	4,3	3,2	2,8	3,9	2,3	2,4	4,5	2,4	2,0	3,3	2,2	2,4
child benefits	2,7	3,6	4,6	1,9	3,9	5,3	2,4	3,2	6,6	2,0	3,3	4,3
social aid	0,3	0,2	2,8	0,5	0,7	3,0	0,3	0,6	3,8	0,2	0,4	2,4
Other income	18,9	22,6	22,7	19,0	20,2	21,1	15,7	17,9	22,9	17,7	21,1	29,3
remittances from abroad	15,3	18,1	18,3	16,1	17,1	17,9	13,5	14,9	19,0	14,6	17,0	24,4

Table 10. Structure of disposable income of households with children, by number of children in the household and by area of residence, 2019-2022

	2019						2020																																																																																																																																																																																																																																																																																																																																																																				
	Area of residence						Area of residence																																																																																																																																																																																																																																																																																																																																																																				
	Urban			Rural			Urban			Rural																																																																																																																																																																																																																																																																																																																																																																	
	Number of children under 18			Number of children under 18			Number of children under 18			Number of children under 18																																																																																																																																																																																																																																																																																																																																																																	
	House-holds with 1 child	House-holds with 2 children	House-holds with 3 and more children	House-holds with 1 child	House-holds with 2 children	House-holds with 3 and more children	House-holds with 1 child	House-holds with 2 children	House-holds with 3 and more children	House-holds with 1 child	House-holds with 2 children	House-holds with 3 and more children																																																																																																																																																																																																																																																																																																																																																															
Disposable income (monthly average per capita), MDL	3584,2	2805,5	2076,4	2389,0	2025,1	1502,2	3615,5	2932,2	2169,9	2601,6	2256,3	1698,7																																																																																																																																																																																																																																																																																																																																																															
<i>including in % by sources:</i>													Salary-based work	69,4	63,5	55,0	43,9	40,2	32,7	65,7	67,9	45,3	47,0	45,6	35,7	Individual farming activity	0,5	0,6	1,9	16,1	15,3	19,2	0,8	0,7	0,8	17,7	13,8	15,3	Individual non-farming activity	5,0	10,5	12,7	7,1	7,8	9,9	6,0	7,6	24,7	6,9	7,4	10,9	Property income	0,4	0,2	-	0,5	0,1	-	1,8	-	-	-	0,0	-	Social benefits	8,7	7,6	7,4	9,8	8,8	15,6	7,2	9,4	12,2	9,0	7,0	14,6	pensions	3,3	2,0	1,9	5,5	4,4	3,4	3,2	2,0	1,8	4,6	2,5	2,7	child benefits	3,5	4,8	4,3	1,6	2,3	4,8	2,7	5,6	7,1	1,0	2,1	4,2	social aid	-	-	0,5	0,6	0,3	4,3	0,2	0,7	0,3	0,9	0,7	4,5	Other income	16,0	17,5	23,0	22,5	27,9	22,6	18,5	14,4	17,1	19,5	26,2	23,4	remittances from abroad	10,8	11,7	16,0	21,1	24,8	19,7	14,2	9,6	12,3	18,2	24,8	21,0		2021						2022							Area of residence						Area of residence							Urban			Rural			Urban			Rural				Number of children under 18			Number of children under 18			Number of children under 18			Number of children under 18				House-holds with 1 child	House-holds with 2 children	House-holds with 3 and more children	House-holds with 1 child	House-holds with 2 children	House-holds with 3 and more children	House-holds with 1 child	House-holds with 2 children	House-holds with 3 and more children	House-holds with 1 child	House-holds with 2 children	House-holds with 3 and more children	Disposable income (monthly average per capita), MDL	4200,0	3617,2	2314,2	3029,9	2349,0	1925,9	5803,0	4290,1	2751,1	3466,0	2750,6	2483,7	<i>including in % by sources:</i>													Salary-based work	69,8	63,1	52,1	46,8	46,3	31,8	70,1	60,6	48,2	47,5	48,6	36,4	Individual farming activity	0,2	0,2	1,3	16,9	15,1	13,4	0,1	1,2	0,5	17,3	14,3	11,6	Individual non-farming activity	9,2	11,3	13,8	7,0	11,0	13,0	7,0	9,0	8,5	6,5	9,5	11,3	Property income	0,3	2,0	-	-	-	0,1	0,1	0,4	-	-	-	-	Social benefits	8,5	6,9	11,8	9,1	7,9	17,8	7,1	7,0	9,7	7,0	7,7	13,5	pensions	3,8	1,7	0,7	5,3	3,3	2,6	3,2	1,9	4,1	3,5	2,7	1,5	child benefits	3,7	4,2	7,0	0,9	1,9	6,5	2,7	4,3	3,9	0,7	1,9	4,6	social aid	0,0	0,2	2,4	0,6	1,1	4,5	0,0	0,1	-	0,4	0,8	3,7	Other income	11,9	16,5	21,0	20,1	19,7	23,8	15,6	21,9	33,0	21,7	19,9	27,3	remittances from abroad	8,9	12,3	16,5	18,9	18,1	20,2	11,8	16,5	22,7	19,7	17,7	25,4
Salary-based work	69,4	63,5	55,0	43,9	40,2	32,7	65,7	67,9	45,3	47,0	45,6	35,7																																																																																																																																																																																																																																																																																																																																																															
Individual farming activity	0,5	0,6	1,9	16,1	15,3	19,2	0,8	0,7	0,8	17,7	13,8	15,3																																																																																																																																																																																																																																																																																																																																																															
Individual non-farming activity	5,0	10,5	12,7	7,1	7,8	9,9	6,0	7,6	24,7	6,9	7,4	10,9																																																																																																																																																																																																																																																																																																																																																															
Property income	0,4	0,2	-	0,5	0,1	-	1,8	-	-	-	0,0	-																																																																																																																																																																																																																																																																																																																																																															
Social benefits	8,7	7,6	7,4	9,8	8,8	15,6	7,2	9,4	12,2	9,0	7,0	14,6																																																																																																																																																																																																																																																																																																																																																															
pensions	3,3	2,0	1,9	5,5	4,4	3,4	3,2	2,0	1,8	4,6	2,5	2,7																																																																																																																																																																																																																																																																																																																																																															
child benefits	3,5	4,8	4,3	1,6	2,3	4,8	2,7	5,6	7,1	1,0	2,1	4,2																																																																																																																																																																																																																																																																																																																																																															
social aid	-	-	0,5	0,6	0,3	4,3	0,2	0,7	0,3	0,9	0,7	4,5																																																																																																																																																																																																																																																																																																																																																															
Other income	16,0	17,5	23,0	22,5	27,9	22,6	18,5	14,4	17,1	19,5	26,2	23,4																																																																																																																																																																																																																																																																																																																																																															
remittances from abroad	10,8	11,7	16,0	21,1	24,8	19,7	14,2	9,6	12,3	18,2	24,8	21,0																																																																																																																																																																																																																																																																																																																																																															
	2021						2022																																																																																																																																																																																																																																																																																																																																																																				
	Area of residence						Area of residence																																																																																																																																																																																																																																																																																																																																																																				
	Urban			Rural			Urban			Rural																																																																																																																																																																																																																																																																																																																																																																	
	Number of children under 18			Number of children under 18			Number of children under 18			Number of children under 18																																																																																																																																																																																																																																																																																																																																																																	
	House-holds with 1 child	House-holds with 2 children	House-holds with 3 and more children	House-holds with 1 child	House-holds with 2 children	House-holds with 3 and more children	House-holds with 1 child	House-holds with 2 children	House-holds with 3 and more children	House-holds with 1 child	House-holds with 2 children	House-holds with 3 and more children																																																																																																																																																																																																																																																																																																																																																															
Disposable income (monthly average per capita), MDL	4200,0	3617,2	2314,2	3029,9	2349,0	1925,9	5803,0	4290,1	2751,1	3466,0	2750,6	2483,7																																																																																																																																																																																																																																																																																																																																																															
<i>including in % by sources:</i>													Salary-based work	69,8	63,1	52,1	46,8	46,3	31,8	70,1	60,6	48,2	47,5	48,6	36,4	Individual farming activity	0,2	0,2	1,3	16,9	15,1	13,4	0,1	1,2	0,5	17,3	14,3	11,6	Individual non-farming activity	9,2	11,3	13,8	7,0	11,0	13,0	7,0	9,0	8,5	6,5	9,5	11,3	Property income	0,3	2,0	-	-	-	0,1	0,1	0,4	-	-	-	-	Social benefits	8,5	6,9	11,8	9,1	7,9	17,8	7,1	7,0	9,7	7,0	7,7	13,5	pensions	3,8	1,7	0,7	5,3	3,3	2,6	3,2	1,9	4,1	3,5	2,7	1,5	child benefits	3,7	4,2	7,0	0,9	1,9	6,5	2,7	4,3	3,9	0,7	1,9	4,6	social aid	0,0	0,2	2,4	0,6	1,1	4,5	0,0	0,1	-	0,4	0,8	3,7	Other income	11,9	16,5	21,0	20,1	19,7	23,8	15,6	21,9	33,0	21,7	19,9	27,3	remittances from abroad	8,9	12,3	16,5	18,9	18,1	20,2	11,8	16,5	22,7	19,7	17,7	25,4																																																																																																																																																																																																																													
Salary-based work	69,8	63,1	52,1	46,8	46,3	31,8	70,1	60,6	48,2	47,5	48,6	36,4																																																																																																																																																																																																																																																																																																																																																															
Individual farming activity	0,2	0,2	1,3	16,9	15,1	13,4	0,1	1,2	0,5	17,3	14,3	11,6																																																																																																																																																																																																																																																																																																																																																															
Individual non-farming activity	9,2	11,3	13,8	7,0	11,0	13,0	7,0	9,0	8,5	6,5	9,5	11,3																																																																																																																																																																																																																																																																																																																																																															
Property income	0,3	2,0	-	-	-	0,1	0,1	0,4	-	-	-	-																																																																																																																																																																																																																																																																																																																																																															
Social benefits	8,5	6,9	11,8	9,1	7,9	17,8	7,1	7,0	9,7	7,0	7,7	13,5																																																																																																																																																																																																																																																																																																																																																															
pensions	3,8	1,7	0,7	5,3	3,3	2,6	3,2	1,9	4,1	3,5	2,7	1,5																																																																																																																																																																																																																																																																																																																																																															
child benefits	3,7	4,2	7,0	0,9	1,9	6,5	2,7	4,3	3,9	0,7	1,9	4,6																																																																																																																																																																																																																																																																																																																																																															
social aid	0,0	0,2	2,4	0,6	1,1	4,5	0,0	0,1	-	0,4	0,8	3,7																																																																																																																																																																																																																																																																																																																																																															
Other income	11,9	16,5	21,0	20,1	19,7	23,8	15,6	21,9	33,0	21,7	19,9	27,3																																																																																																																																																																																																																																																																																																																																																															
remittances from abroad	8,9	12,3	16,5	18,9	18,1	20,2	11,8	16,5	22,7	19,7	17,7	25,4																																																																																																																																																																																																																																																																																																																																																															

Table 11. Structure of disposable income of households with children, by type of household, 2019-2022

	2019			2020			2021			2022		
	Type of household with children under 18			Type of household with children under 18			Type of household with children under 18			Type of household with children under 18		
	Spouses with children	Single parent with children	Other households with children	Spouses with children	Single parent with children	Other households with children	Spouses with children	Single parent with children	Other households with children	Spouses with children	Single parent with children	Other households with children
Disposable income (monthly average per capita), MDL	2596,0	2298,8	2198,5	2730,9	2463,4	2433,7	3201,4	2918,2	2659,3	3854,8	3647,9	3443,9
<i>including in % by sources:</i>												
Salary-based work	58,2	52,6	43,1	57,9	55,4	47,4	57,7	51,6	49,7	58,4	56,3	51,3
Individual farming activity	6,8	4,2	12,0	7,9	3,6	9,9	7,5	3,2	9,0	6,4	3,1	7,9
Individual non-farming activity	8,6	6,3	6,7	9,1	3,0	7,1	10,8	9,2	8,4	9,0	4,8	7,3
Property income	0,2	-	0,4	0,6	0,7	0,0	0,8	-	-	-	1,3	0,1
Social benefits	6,5	7,7	15,5	6,3	16,0	12,9	6,7	9,9	14,6	6,0	9,4	12,4
pensions	1,1	1,2	9,6	0,5	6,0	7,6	0,8	3,7	8,8	0,8	2,4	8,1
child benefits	4,1	1,9	1,8	3,9	1,3	1,9	3,9	0,8	2,3	3,5	1,4	1,5
social aid	0,4	2,8	0,5	0,7	4,9	0,6	0,8	2,4	1,0	0,5	2,2	0,4
Other income	19,7	29,1	22,3	18,1	21,4	22,7	16,6	26,2	18,2	20,2	25,2	21,0
remittances from abroad	15,4	16,0	20,2	15,3	12,0	20,3	14,2	14,9	16,1	16,9	11,3	18,4

Table 12. Structure of disposable income of households with children, by type of household and by area of residence, 2019-2022

	2019						2020					
	Area of residence						Area of residence					
	Urban			Rural			Urban			Rural		
	Type of household with children under 18			Type of household with children under 18			Type of household with children under 18			Type of household with children under 18		
	Spouses with children	Single parent with children	Other households with children	Spouses with children	Single parent with children	Other households with children	Spouses with children	Single parent with children	Other households with children	Spouses with children	Single parent with children	Other households with children
Disposable income (monthly average per capita), MDL	3135,2	2655,7	2763,0	2068,0	1811,0	2009,7	3334,7	2911,2	2612,9	2220,5	1986,1	2345,0
<i>including in % by sources:</i>												
Salary-based work	67,7	58,5	59,1	44,1	41,0	35,7	68,1	56,6	55,6	45,0	53,5	42,9
Individual farming activity	0,5	0,3	1,6	16,2	12,1	16,7	0,5	0,3	1,7	17,3	8,8	14,4
Individual non-farming activity	8,3	7,5	7,0	9,0	3,9	6,6	9,0	2,2	8,9	9,3	4,2	6,0
Property income	0,3	-	-	0,1	-	0,5	1,1	1,1	0,1	0,0	-	-
Social benefits	6,2	3,7	17,6	6,8	15,8	14,6	6,7	16,9	12,1	5,9	14,6	13,3
pensions	0,8	0,7	11,0	1,5	2,2	9,0	0,3	8,0	8,1	0,8	2,9	7,3
child benefits	4,8	2,2	1,9	3,0	1,2	1,8	5,2	1,9	2,2	2,3	0,4	1,7
social aid	0,1	-	-	1,0	8,3	0,7	0,2	3,3	0,2	1,4	7,4	0,9
Other income	16,9	30,1	14,7	23,8	27,2	25,8	14,6	23,0	21,6	22,6	19,0	23,3
remittances from abroad	11,6	14,0	11,1	21,0	19,9	24,4	10,9	10,1	16,8	21,0	15,0	22,2
	2021						2022					
	Area of residence						Area of residence					
	Urban			Rural			Urban			Rural		
	Type of household with children under 18			Type of household with children under 18			Type of household with children under 18			Type of household with children under 18		
	Spouses with children	Single parent with children	Other households with children	Spouses with children	Single parent with children	Other households with children	Spouses with children	Single parent with children	Other households with children	Spouses with children	Single parent with children	Other households with children
Disposable income (monthly average per capita), MDL	4038,5	3296,7	2985,6	2515,5	2344,5	2496,2	4888,4	4665,4	4074,8	2902,9	2270,8	3038,8
<i>including in % by sources:</i>												
Salary-based work	68,1	56,1	59,6	43,9	42,1	43,8	66,5	58,8	58,6	45,8	49,1	44,9
Individual farming activity	0,2	0,2	0,8	17,1	9,4	13,9	0,6	0,1	0,7	15,5	11,3	14,2
Individual non-farming activity	10,4	10,5	10,7	11,4	6,3	7,1	8,1	5,2	8,6	10,4	3,6	6,3
Property income	1,4	-	-	0,0	-	-	-	1,8	0,2	-	-	-
Social benefits	6,6	7,9	13,3	6,8	14,1	15,4	5,9	3,9	13,7	6,3	24,6	11,3
pensions	0,5	3,3	9,6	1,2	4,7	8,3	0,7	0,5	10,7	0,8	7,8	5,8
child benefits	5,3	1,1	1,3	2,0	-	2,9	4,3	1,8	1,3	2,3	0,3	1,7
social aid	0,2	1,0	0,6	1,5	5,5	1,2	-	0,7	-	1,2	6,3	0,8
Other income	13,4	25,2	15,5	20,9	28,1	19,7	18,9	30,2	18,1	22,1	11,3	23,4
remittances from abroad	10,5	11,8	12,0	19,0	21,7	18,5	15,0	12,9	14,3	20,0	6,7	21,9

Table 13. Structure of disposable income of households with children, by presence of persons abroad in the household, 2019-2022

	2019		2020		2021		2022	
	Type of household with children and persons abroad		Type of household with children and persons abroad		Type of household with children and persons abroad		Type of household with children and persons abroad	
	Households with children and persons abroad	Households with children and no persons abroad	Households with children and persons abroad	Households with children and no persons abroad	Households with children and persons abroad	Households with children and no persons abroad	Households with children and persons abroad	Households with children and no persons abroad
Disposable income (monthly average per capita), MDL	2351,0	2469,6	2587,1	2620,7	2840,8	3032,0	3391,7	3800,4
<i>including in % by sources:</i>								
Salary-based work	24,7	59,2	25,6	59,3	25,0	59,6	26,5	62,2
Individual farming activity	8,7	8,1	6,2	8,7	5,2	8,1	5,9	6,7
Individual non-farming activity	2,0	9,1	2,5	9,1	3,7	11,0	1,7	9,6
Property income	-	0,3	-	0,5	-	0,6	0,2	0,1
Social benefits	8,6	9,3	7,2	9,2	7,8	9,4	7,4	8,0
pensions	4,0	3,5	3,3	3,0	2,4	3,5	2,4	2,8
child benefits	2,5	3,5	2,0	3,3	2,8	3,3	1,8	3,0
social aid	0,3	0,6	0,6	1,0	1,0	0,9	1,1	0,4
Other income	56,0	13,9	58,5	13,3	58,3	11,2	58,4	13,4
remittances from abroad	54,1	9,4	56,5	10,1	57,1	8,2	56,1	9,4

Table 14. Structure of disposable income of households with children, by presence of persons abroad in the household and by area of residence, 2019-2022

	2019				2020			
	Type of household with children and persons abroad				Type of household with children and persons abroad			
	Households with children and persons abroad		Households with children and no persons abroad		Households with children and persons abroad		Households with children and no persons abroad	
	Area of residence		Area of residence		Area of residence		Area of residence	
	Urban	Rural	Urban	Rural	Urban	Rural	Urban	Rural
Disposable income (monthly average per capita), MDL	2594,8	2277,9	3072,9	1961,1	2951,8	2436,2	3131,3	2220,4
<i>including in % by sources:</i>								
Salary-based work	32,3	22,1	68,6	46,8	30,5	23,1	68,1	49,5
Individual farming activity	1,5	11,1	0,6	18,1	1,4	8,6	0,7	17,4
Individual non-farming activity	1,2	2,2	8,6	9,8	1,7	2,9	9,3	8,9
Property income	-	-	0,3	0,3	-	-	1,0	0,0
Social benefits	7,2	9,1	8,2	10,8	6,7	7,5	8,8	9,6
pensions	2,5	4,5	2,7	4,7	2,9	3,6	2,5	3,5
child benefits	2,6	2,4	4,3	2,4	2,3	1,8	4,5	2,0
social aid	-	0,4	0,1	1,4	0,1	0,8	0,4	1,6
Other income	57,8	55,4	13,7	14,2	59,7	57,9	12,1	14,6
remittances from abroad	54,3	54,0	7,9	11,5	56,6	56,5	7,5	13,0
	2021				2022			
	Type of household with children and persons abroad				Type of household with children and persons abroad			
	Households with children and persons abroad		Households with children and no persons abroad		Households with children and persons abroad		Households with children and no persons abroad	
	Area of residence		Area of residence		Area of residence		Area of residence	
	Urban	Rural	Urban	Rural	Urban	Rural	Urban	Rural
Disposable income (monthly average per capita), MDL	3373,0	2637,4	3739,8	2474,0	3883,5	3141,7	4798,8	2847,0
<i>including in % by sources:</i>								
Salary-based work	33,2	21,0	68,6	49,0	28,2	25,5	68,6	51,9
Individual farming activity	0,4	7,6	0,3	17,5	0,1	9,5	0,7	16,5
Individual non-farming activity	4,3	3,3	11,0	11,0	1,7	1,7	8,7	10,9
Property income	-	-	1,1	0,0	0,4	-	0,2	-
Social benefits	6,6	8,4	8,3	10,8	5,7	8,4	7,5	8,7
pensions	0,7	3,2	2,9	4,3	1,2	3,1	2,9	2,6
child benefits	3,1	2,6	4,3	2,2	2,0	1,6	3,6	2,1
social aid	0,9	1,0	0,2	1,6	-	1,8	0,1	1,1
Other income	55,4	59,7	10,7	11,8	63,8	54,9	14,4	11,9
remittances from abroad	53,8	58,8	6,9	9,8	60,4	53,5	9,1	9,7

Table 15. Structure of income of households with children, by quintiles, 2019-2022

	2019					2020				
	Quintiles (consumption expenses)					Quintiles (consumption expenses)				
	1	2	3	4	5	1	2	3	4	5
Disposable income (monthly average per capita), MDL	1425,5	2012,0	2379,2	2882,8	4320,9	1572,4	2210,5	2664,5	3075,1	4527,8
<i>including in % by sources:</i>										
Salary-based work	39,6	47,4	48,6	55,6	66,5	39,8	51,3	53,7	59,4	62,8
Individual farming activity	17,5	12,9	8,3	6,6	1,5	14,6	14,1	7,8	6,8	1,8
Individual non-farming activity	10,0	8,0	7,9	7,9	6,8	9,0	9,0	9,7	7,8	6,3
Property income	0,1	-	-	-	0,8	-	-	0,0	0,1	1,6
Social benefits	15,3	10,0	9,8	8,3	5,7	14,8	9,7	8,1	7,5	6,2
pensions	6,3	5,4	3,7	2,6	1,8	4,8	3,9	3,1	2,3	1,8
child benefits	2,9	2,6	4,1	3,2	3,4	2,5	2,0	3,2	3,3	4,1
social aid	2,8	0,4	0,3	-	-	3,8	1,1	0,2	0,3	0,0
Other income	17,4	21,6	25,3	21,7	18,8	21,8	15,9	20,7	18,5	21,3
remittances from abroad	14,1	18,3	21,2	17,5	14,0	18,8	13,7	17,9	14,6	18,2
	2021					2022				
	Quintiles (consumption expenses)					Quintiles (consumption expenses)				
	1	2	3	4	5	1	2	3	4	5
Disposable income (monthly average per capita), MDL	1808,7	2422,3	3055,0	3490,2	5330,2	2196,9	2903,6	3493,1	4594,8	6696,0
<i>including in % by sources:</i>										
Salary-based work	41,7	48,5	54,9	55,7	66,7	47,6	52,2	52,1	53,5	67,8
Individual farming activity	14,0	10,4	5,1	9,7	2,8	14,0	9,2	8,9	4,3	1,5
Individual non-farming activity	9,1	13,5	13,2	6,4	8,9	9,8	6,8	9,8	10,7	5,8
Property income	-	-	-	0,7	1,3	-	-	-	-	0,4
Social benefits	16,5	9,5	6,2	8,5	7,2	11,4	9,1	6,6	7,3	6,3
pensions	4,8	3,8	3,4	2,5	2,7	3,9	3,1	2,3	2,4	2,3
child benefits	3,4	2,8	1,4	4,4	3,9	2,1	3,2	1,2	3,7	3,3
social aid	4,2	0,6	0,3	0,2	-	2,2	0,4	0,7	0,1	-
Other income	18,7	18,1	20,7	19,1	13,2	17,0	22,7	22,6	24,2	18,2
remittances from abroad	16,0	16,0	18,8	15,5	10,1	14,2	18,7	19,4	20,3	13,8

Table 16. Structure of income of households with children, by quintiles and by area of residence, 2019-2020

	2019									
	Area of residence									
	Urban					Rural				
	Quintiles (consumption expenses)					Quintiles (consumption expenses)				
	1	2	3	4	5	1	2	3	4	5
Disposable income (monthly average per capita), MDL	1527,2	1998,6	2396,3	2979,3	4591,2	1407,6	2019,0	2365,2	2755,4	3457,3
<i>including in % by sources:</i>										
Salary-based work	62,4	58,8	59,9	62,0	71,6	35,3	41,5	39,2	46,4	44,7
Individual farming activity	4,1	1,1	0,7	0,9	0,1	20,1	19,0	14,7	14,6	7,3
Individual non-farming activity	10,3	6,5	10,4	10,1	6,1	9,9	8,8	5,9	4,7	9,4
Property income	-	-	-	-	0,6	0,1	-	-	-	2,0
Social benefits	12,6	11,5	10,3	7,9	6,1	15,8	9,3	9,4	8,9	3,8
pensions	6,3	5,5	3,6	1,1	1,9	6,3	5,3	3,8	4,7	1,3
child benefits	3,7	4,4	5,4	3,4	4,0	2,7	1,7	3,0	2,9	1,1
social aid	1,0	-	-	-	-	3,1	0,6	0,6	-	-
Other income	10,6	22,1	18,7	19,1	15,5	18,8	21,4	30,8	25,3	32,8
remittances from abroad	5,3	16,2	12,3	13,1	10,4	15,7	19,5	28,6	23,7	29,6
	2020									
	Area of residence									
	Urban					Rural				
	Quintiles (consumption expenses)					Quintiles (consumption expenses)				
	1	2	3	4	5	1	2	3	4	5
Disposable income (monthly average per capita), MDL	1637,7	2303,4	2447,0	3091,4	4599,1	1557,5	2172,3	2841,2	3052,7	4222,4
<i>including in % by sources:</i>										
Salary-based work	51,9	63,0	62,8	66,7	66,2	36,9	46,2	47,3	49,2	46,7
Individual farming activity	2,9	1,8	0,6	0,3	0,4	17,4	19,4	12,9	15,7	8,0
Individual non-farming activity	14,6	9,9	10,9	7,9	6,8	7,6	8,6	8,8	7,6	3,7
Property income	-	-	-	0,1	2,0	-	-	0,0	-	-
Social benefits	13,0	12,8	8,5	8,7	6,8	15,2	8,4	7,8	5,8	3,7
pensions	3,8	5,1	3,6	1,9	1,7	5,0	3,4	2,7	2,9	2,3
child benefits	2,3	2,8	3,4	5,2	4,8	2,6	1,7	3,1	0,7	0,8
social aid	3,4	1,4	-	-	0,0	3,9	0,9	0,3	0,7	-
Other income	17,6	12,5	17,1	16,2	17,7	22,9	17,4	23,3	21,7	37,9
remittances from abroad	12,3	8,0	12,3	10,2	14,2	20,3	16,3	21,9	20,9	36,8

Table 17. Structure of income of households with children, by quintiles and by area of residence, 2021-2022

	2021									
	Area of residence									
	Urban					Rural				
	Quintiles (consumption expenses)					Quintiles (consumption expenses)				
	1	2	3	4	5	1	2	3	4	5
Disposable income (monthly average per capita), MDL	1830,9	2462,4	3173,5	3484,6	5555,2	1804,6	2405,8	2948,8	3498,7	4508,6
<i>including in % by sources:</i>										
Salary-based work	50,8	58,4	56,8	67,5	71,4	40,0	44,3	53,0	37,6	45,3
Individual farming activity	2,1	1,1	0,4	0,1	0,0	16,2	14,3	9,6	24,3	15,1
Individual non-farming activity	6,9	16,5	16,3	5,0	10,1	9,5	12,2	10,1	8,6	3,5
Property income	-	-	-	1,2	1,6	-	-	-	-	0,2
Social benefits	21,9	10,3	6,2	8,9	6,4	15,5	9,2	6,2	7,8	10,4
pensions	6,3	5,1	4,2	2,4	1,3	4,5	3,3	2,7	2,7	9,3
child benefits	7,0	2,8	1,4	5,4	4,6	2,7	2,8	1,3	2,9	0,7
social aid	5,1	0,0	-	0,2	-	4,0	0,8	0,7	0,3	-
Other income	18,4	13,7	20,4	17,3	10,4	18,8	19,9	21,0	21,7	25,5
remittances from abroad	11,2	10,3	17,7	11,9	7,8	16,8	18,4	19,8	21,0	20,6
	2022									
	Area of residence									
	Urban					Rural				
	Quintiles (consumption expenses)					Quintiles (consumption expenses)				
	1	2	3	4	5	1	2	3	4	5
Disposable income (monthly average per capita), MDL	2511,3	3097,2	3475,3	4585,9	7044,5	2140,5	2775,0	3510,2	4611,0	4801,1
<i>including in % by sources:</i>										
Salary-based work	55,4	51,6	59,4	60,6	71,8	46,0	52,7	45,1	40,7	35,8
Individual farming activity	1,3	0,5	1,8	0,1	0,5	16,7	15,6	15,7	11,8	10,1
Individual non-farming activity	11,5	7,4	11,3	11,3	5,1	9,5	6,4	8,4	9,6	11,4
Property income	-	-	-	-	0,4	-	-	-	-	-
Social benefits	10,7	10,4	6,4	7,0	6,5	11,6	8,1	6,7	7,9	4,3
pensions	5,5	3,0	2,8	2,3	2,5	3,5	3,2	1,8	2,7	0,6
child benefits	3,5	5,6	0,9	4,0	3,3	1,8	1,5	1,5	3,0	3,1
social aid	0,2	-	0,3	-	-	2,6	0,7	1,0	0,4	-
Other income	21,1	30,1	21,1	21,0	15,7	16,2	17,2	24,1	29,9	38,3
remittances from abroad	14,6	23,4	15,6	16,6	11,1	14,1	15,2	23,1	27,2	35,5

Table 18. Structure of social benefits for households with children, 2019-2022

	2019		2020		2021		2022	
	Type of household		Type of household		Type of household		Type of household	
	Households with children	Households without children	Households with children	Households without children	Households with children	Households without children	Households with children	Households without children
Social benefits (monthly average per capita), MDL	226,0	857,4	232,9	971,7	276,2	1023,2	293,1	1381,1
including in %:								
pensions	39,2	87,2	34,0	85,0	36,4	85,9	34,8	85,8
child benefits	35,7	-	35,3	-	35,4	-	36,2	-
social aid	6,2	1,3	10,3	1,3	9,7	1,4	7,1	0,6
other benefits	18,8	11,5	20,3	13,7	18,5	12,7	22,0	13,6

Table 19. Structure of social benefits for households with children, by number of children in the household, 2019-2022

	2019			2020			2021			2022		
	Number of children under 18			Number of children under 18			Number of children under 18			Number of children under 18		
	Households with 1 child	Households with 2 children	Households with 3 and more children	Households with 1 child	Households with 2 children	Households with 3 and more children	Households with 1 child	Households with 2 children	Households with 3 and more children	Households with 1 child	Households with 2 children	Households with 3 and more children
Social benefits (monthly average per capita), MDL	270,9	193,4	209,6	245,6	210,2	253,5	314,2	213,5	323,2	331,4	254,4	313,2
including in %:												
pensions	46,3	38,5	22,7	48,1	27,6	17,2	51,0	32,4	12,4	46,6	30,6	19,8
child benefits	28,8	43,9	36,8	23,6	47,3	38,2	27,3	42,9	41,8	27,7	45,2	35,5
social aid	3,0	2,0	22,7	6,4	8,0	21,8	3,4	8,2	24,1	2,1	5,3	19,8
other benefits	21,8	15,6	17,8	21,9	17,1	22,8	18,3	16,4	21,6	23,6	18,9	24,9

Table 20. Structure of social benefits for households with children, by type of household, 2019-2022

	2019			2020			2021			2022		
	Type of household with children under 18			Type of household with children under 18			Type of household with children under 18			Type of household with children under 18		
	Spouses with children	Single parent with children	Other households with children	Spouses with children	Single parent with children	Other households with children	Spouses with children	Single parent with children	Other households with children	Spouses with children	Single parent with children	Other households with children
Social benefits (monthly average per capita), MDL	168,0	176,7	341,7	173,3	394,4	313,9	213,2	288,1	389,2	231,7	343,0	427,5
including in %:												
pensions	16,5	15,6	61,9	8,3	37,6	58,9	12,5	37,5	60,1	12,8	25,6	65,0
child benefits	63,0	24,4	11,7	61,7	8,3	14,7	58,0	7,7	15,6	58,1	14,7	12,0
social aid	6,8	35,9	3,2	11,4	30,4	5,0	11,3	24,2	6,6	7,6	22,9	3,3
other benefits	13,7	24,1	23,1	18,5	23,8	21,4	18,1	30,5	17,7	21,6	36,8	19,7

Table 21. Structure of social benefits for households with children, by presence of persons abroad in the household, 2019-2022

	2019		2020		2021		2022	
	Type of household with children and persons abroad		Type of household with children and persons abroad		Type of household with children and persons abroad		Type of household with children and persons abroad	
	Households with children and persons abroad	Households with children and no persons abroad	Households with children and persons abroad	Households with children and no persons abroad	Households with children and persons abroad	Households with children and no persons abroad	Households with children and persons abroad	Households with children and no persons abroad
Social benefits (monthly average per capita), MDL	203,1	230,8	187,5	240,5	221,2	285,3	249,8	302,5
<i>including in %:</i>								
pensions	46,3	37,9	46,2	32,5	30,5	37,1	32,3	35,2
child benefits	28,5	37,1	27,0	36,4	35,4	35,4	24,1	38,3
social aid	3,1	6,8	8,5	10,5	12,4	9,3	15,0	5,6
other benefits	22,2	18,2	18,4	20,6	21,7	18,1	28,5	20,8

Table 22. Structure of social benefits for households with children, by quintiles, 2019-2022

	2019					2020				
	Quintiles (consumption expenses)					Quintiles (consumption expenses)				
	1	2	3	4	5	1	2	3	4	5
Social benefits (monthly average per capita), MDL	218,1	201,5	233,9	239,3	245,5	232,4	215,5	215,5	230,1	282,4
<i>including in %:</i>										
pensions	41,3	53,7	37,8	31,0	31,6	32,5	39,9	37,7	30,8	29,4
child benefits	18,8	26,3	41,6	38,4	60,5	17,0	21,0	39,9	44,3	66,2
social aid	18,3	4,2	3,3	-	-	25,5	10,8	2,0	3,7	0,3
other benefits	21,7	15,7	17,3	30,7	8,0	24,9	28,3	20,4	21,1	4,0
	2021					2022				
	Quintiles (consumption expenses)					Quintiles (consumption expenses)				
	1	2	3	4	5	1	2	3	4	5
Social benefits (monthly average per capita), MDL	298,2	231,3	189,0	294,9	381,1	251,5	264,5	229,3	334,8	419,4
<i>including in %:</i>										
pensions	29,1	39,9	55,3	29,8	38,1	33,8	34,2	35,3	33,3	37,0
child benefits	20,6	29,0	22,1	52,0	54,9	18,6	35,2	18,6	50,2	52,6
social aid	25,2	5,9	5,5	2,3	-	18,8	4,6	10,1	1,8	-
other benefits	25,0	25,1	17,1	15,9	7,0	28,9	26,0	35,9	14,7	10,4

Table 23. Structure of social benefits for households with children, 2019-2022

	2019		2020		2021		2022	
	Type of household		Type of household		Type of household		Type of household	
	Households with children	Households without children	Households with children	Households without children	Households with children	Households without children	Households with children	Households without children
Social benefits (monthly average per capita), MDL	226,0	857,4	232,9	971,7	276,2	1023,2	293,1	1381,1
<i>including in %:</i>								
Social insurance payments	43,0	87,4	34,7	85,0	37,1	86,0	36,8	86,7
Social aid payments	57,0	12,6	65,3	15,0	62,9	14,0	63,2	13,3

Table 24. Structure of social benefits for households with children, by number of children in the household, 2019-2022

	2019			2020			2021			2022		
	Number of children under 18			Number of children under 18			Number of children under 18			Number of children under 18		
	Households with 1 child	Households with 2 children	Households with 3 and more children	Households with 1 child	Households with 2 children	Households with 3 and more children	Households with 1 child	Households with 2 children	Households with 3 and more children	Households with 1 child	Households with 2 children	Households with 3 and more children
Social benefits (monthly average per capita), MDL	270,9	193,4	209,6	245,6	210,2	253,5	314,2	213,5	323,2	331,4	254,4	313,2
<i>including in %:</i>												
Social insurance payments	53,6	39,8	22,7	49,5	27,8	17,2	51,0	32,4	15,6	51,7	30,6	19,8
Social aid payments	46,4	60,2	77,3	50,5	72,2	82,8	49,0	67,6	84,4	48,3	69,4	80,2

Table 25. Structure of social benefits for households with children, by type of household, 2019-2022

	2019			2020			2021			2022		
	Type of household with children under 18			Type of household with children under 18			Type of household with children under 18			Type of household with children under 18		
	Spouses with children	Single parent with children	Other households with children	Spouses with children	Single parent with children	Other households with children	Spouses with children	Single parent with children	Other households with children	Spouses with children	Single parent with children	Other households with children
Social benefits (monthly average per capita), MDL	168,0	176,7	341,7	173,3	394,4	313,9	213,2	288,1	389,2	231,7	343,0	427,5
<i>including in %:</i>												
Social insurance payments	17,6	15,6	68,5	8,3	38,2	60,2	14,1	37,5	60,1	16,7	25,6	65,0
Social aid payments	82,4	84,4	31,5	91,7	61,8	39,8	85,9	62,5	39,9	83,3	74,4	35,0

Table 26. Structure of social benefits for households with children, by presence of persons abroad in the household, 2019-2022

	2019		2020		2021		2022	
	Type of household with children and persons abroad		Type of household with children and persons abroad		Type of household with children and persons abroad		Type of household with children and persons abroad	
	Households with children and persons abroad	Households with children and no persons abroad	Households with children and persons abroad	Households with children and no persons abroad	Households with children and persons abroad	Households with children and no persons abroad	Households with children and persons abroad	Households with children and no persons abroad
Social benefits (monthly average per capita), MDL	203,1	230,8	187,5	240,5	221,2	285,3	249,8	302,5
<i>including in %:</i>								
Social insurance payments	49,4	41,8	46,2	33,2	30,5	38,0	39,6	36,3
Social aid payments	50,6	58,2	53,8	66,8	69,5	62,0	60,4	63,7

Table 27. Structure of social benefits for households with children, by quintiles, 2019-2022

	2019					2020				
	Quintiles (consumption expenses)					Quintiles (consumption expenses)				
	1	2	3	4	5	1	2	3	4	5
Social benefits (monthly average per capita), MDL	218,1	201,5	233,9	239,3	245,5	232,4	215,5	215,5	230,1	282,4
<i>including in %:</i>										
Social insurance payments	41,3	53,7	37,8	52,7	31,6	32,8	39,9	41,3	30,8	29,4
Social aid payments	58,7	46,3	62,2	47,3	68,4	67,2	60,1	58,7	69,2	70,6
	2021					2022				
	Quintiles (consumption expenses)					Quintiles (consumption expenses)				
	1	2	3	4	5	1	2	3	4	5
Social benefits (monthly average per capita), MDL	298,2	231,3	189,0	294,9	381,1	251,5	264,5	229,3	334,8	419,4
<i>including in %:</i>										
Social insurance payments	29,1	39,9	55,3	33,8	38,1	33,8	34,2	44,1	33,3	40,8
Social aid payments	70,9	60,1	44,7	66,2	61,9	66,2	65,8	55,9	66,7	59,2

Table 28. Poverty rate by area of residence, 2019-2022

	<i>percent</i>											
	2019			2020			2021			2022		
	Area of residence		Total	Area of residence		Total	Area of residence		Total	Area of residence		Total
	Urban	Rural		Urban	Rural		Urban	Rural		Urban	Rural	
Total population												
Absolute poverty												
non-poor	88,8	65,5	74,8	86,0	64,7	73,2	88,1	67,2	75,5	82,9	59,7	68,9
poor	11,2	34,5	25,2	14,0	35,3	26,8	11,9	32,8	24,5	17,1	40,3	31,1
Total	100,0	100,0	100,0	100,0	100,0	100,0	100,0	100,0	100,0	100,0	100,0	100,0
Extreme poverty												
non-poor	96,4	84,6	89,3	94,9	85,4	89,2	95,4	87,3	90,5	93,5	81,9	86,5
poor	3,6	15,4	10,7	5,1	14,6	10,8	4,6	12,7	9,5	6,5	18,1	13,5
Total	100,0	100,0	100,0	100,0	100,0	100,0	100,0	100,0	100,0	100,0	100,0	100,0
Children												
Absolute poverty												
non-poor	92,9	64,0	76,0	87,5	64,3	74,0	90,8	65,0	75,6	86,1	59,5	71,6
poor	7,1	36,0	24,0	12,5	35,7	26,0	9,2	35,0	24,4	13,9	40,5	28,4
Total	100,0	100,0	100,0	100,0	100,0	100,0	100,0	100,0	100,0	100,0	100,0	100,0
Extreme poverty												
non-poor	97,5	82,4	88,7	95,8	85,8	90,0	96,5	87,4	91,1	95,2	81,4	87,7
poor	2,5	17,6	11,3	4,2	14,2	10,0	3,5	12,6	8,9	4,8	18,6	12,3
Total	100,0	100,0	100,0	100,0	100,0	100,0	100,0	100,0	100,0	100,0	100,0	100,0

Table 29. Distribution of poor and non-poor population by area of residence, 2019-2022

	<i>percent</i>											
	2019			2020			2021			2022		
	Area of residence		Total	Area of residence		Total	Area of residence		Total	Area of residence		Total
	Urban	Rural		Urban	Rural		Urban	Rural		Urban	Rural	
Total population												
Absolute poverty												
non-poor	47,2	52,8	100,0	46,7	53,3	100,0	46,3	53,7	100,0	47,7	52,3	100,0
poor	17,7	82,3	100,0	20,7	79,3	100,0	19,2	80,8	100,0	21,8	78,2	100,0
Total	39,8	60,2	100,0	39,7	60,3	100,0	39,7	60,3	100,0	39,6	60,4	100,0
Extreme poverty												
non-poor	42,9	57,1	100,0	42,3	57,7	100,0	41,8	58,2	100,0	42,9	57,1	100,0
poor	13,5	86,5	100,0	18,7	81,3	100,0	19,1	80,9	100,0	19,0	81,0	100,0
Total	39,8	60,2	100,0	39,7	60,3	100,0	39,7	60,3	100,0	39,6	60,4	100,0
Children												
Absolute poverty												
non-poor	50,9	49,1	100,0	49,3	50,7	100,0	49,3	50,7	100,0	54,6	45,4	100,0
poor	12,4	87,6	100,0	20,0	80,0	100,0	15,5	84,5	100,0	22,2	77,8	100,0
Total	41,6	58,4	100,0	41,6	58,4	100,0	41,0	59,0	100,0	45,4	54,6	100,0
Extreme poverty												
non-poor	45,8	54,2	100,0	44,3	55,7	100,0	43,4	56,6	100,0	49,3	50,7	100,0
poor	9,0	91,0	100,0	17,3	82,7	100,0	16,3	83,7	100,0	17,6	82,4	100,0
Total	41,6	58,4	100,0	41,6	58,4	100,0	41,0	59,0	100,0	45,4	54,6	100,0

Table 30. Child poverty rate, by the number of children in the household and by type of household, 2019-2022

	<i>percent</i>											
	2019			2020			2021			2022		
	Poverty		Total	Poverty		Total	Poverty		Total	Poverty		Total
non-poor	poor	non-poor		poor	non-poor		poor	non-poor		poor		
Number of children under 18												
Households with 1 child	82,5	17,5	100,0	80,5	19,5	100,0	82,9	17,1	100,0	79,2	20,8	100,0
Households with 2 children	80,5	19,5	100,0	79,5	20,5	100,0	78,5	21,5	100,0	73,5	26,5	100,0
Households with 3 and more children	61,4	38,6	100,0	57,9	42,1	100,0	63,1	36,9	100,0	60,5	39,5	100,0
Total	76,0	24,0	100,0	74,0	26,0	100,0	75,6	24,4	100,0	71,6	28,4	100,0
Type of household with children												
Spouses with children	78,9	21,1	100,0	76,6	23,4	100,0	79,3	20,7	100,0	74,0	26,0	100,0
Single parent with children	74,5	25,5	100,0	68,7	31,3	100,0	72,3	27,7	100,0	69,2	30,8	100,0
Other households with children	69,3	30,7	100,0	68,9	31,1	100,0	66,8	33,2	100,0	64,6	35,4	100,0
Total	76,0	24,0	100,0	74,0	26,0	100,0	75,6	24,4	100,0	71,6	28,4	100,0

Table 31. The distribution of poor and non-poor children by the number of children in the household and by type of household, 2019-2022

	<i>percent</i>											
	2019			2020			2021			2022		
	Poverty		Total	Poverty		Total	Poverty		Total	Poverty		Total
non-poor	poor	non-poor		poor	non-poor		poor	non-poor		poor		
Number of children under 18												
Households with 1 child	29,8	20,1	27,5	31,5	21,7	29,0	31,6	20,1	28,7	28,3	18,7	25,5
Households with 2 children	48,9	37,5	46,2	47,3	34,6	44,0	45,6	38,6	43,9	49,6	45,0	48,3
Households with 3 and more children	21,2	42,4	26,3	21,1	43,7	27,0	22,9	41,3	27,4	22,1	36,4	26,2
Total	100,0	100,0	100,0	100,0	100,0	100,0	100,0	100,0	100,0	100,0	100,0	100,0
Type of household with children												
Spouses with children	68,9	58,5	66,4	68,5	59,5	66,1	70,7	57,2	67,4	72,0	63,6	69,7
Single parent with children	6,7	7,3	6,8	7,0	9,1	7,5	5,9	7,0	6,2	8,5	9,5	8,8
Other households with children	24,3	34,3	26,7	24,5	31,5	26,3	23,4	35,8	26,4	19,5	26,9	21,6
Total	100,0	100,0	100,0	100,0	100,0	100,0	100,0	100,0	100,0	100,0	100,0	100,0

Table 32. Child poverty rate by parents' occupational status, 2019-2022

	2019			2020			2021			2022		
	Poverty		Total	Poverty		Total	Poverty		Total	Poverty		Total
	non-poor	poor		non-poor	poor		non-poor	poor		non-poor	poor	
Parents' occupational status												
Both parents are employed on salary	85,8	14,2	100,0	88,1	11,9	100,0	86,0	14,0	100,0	77,8	22,2	100,0
At least one parent is employed on salary	76,3	23,7	100,0	71,9	28,1	100,0	73,3	26,7	100,0	69,1	30,9	100,0
At least one parent is self-employed	69,4	30,6	100,0	73,1	26,9	100,0	76,0	24,0	100,0	70,3	29,7	100,0
Other situations	70,8	29,2	100,0	65,0	35,0	100,0	68,5	31,5	100,0	69,7	30,3	100,0
Total	76,0	24,0	100,0	74,0	26,0	100,0	75,6	24,4	100,0	71,6	28,4	100,0

Table 33. The distribution of poor and non-poor children, by parents' occupational status, 2019-2022

	2019			2020			2021			2022		
	Poverty		Total	Poverty		Total	Poverty		Total	Poverty		Total
	non-poor	poor		non-poor	poor		non-poor	poor		non-poor	poor	
Parents' occupational status												
Both parents are employed on salary	23,0	12,1	20,4	25,8	10,0	21,7	26,6	13,4	23,4	27,7	19,8	25,4
At least one parent is employed on salary	42,7	41,9	42,5	40,7	45,1	41,8	39,7	44,6	40,9	40,5	45,6	41,9
At least one parent is self-employed	12,0	16,8	13,1	13,0	13,6	13,2	13,0	12,7	12,9	11,8	12,6	12,0
Other situations	22,3	29,2	24,0	20,5	31,3	23,3	20,7	29,3	22,8	20,1	22,0	20,6
Total	100,0	100,0	100,0	100,0	100,0	100,0	100,0	100,0	100,0	100,0	100,0	100,0

Table 34. Child poverty rate, by presence of parents in the family, 2019-2022

	2019		Total	2020		Total	2021		Total	2022		Total
	Poverty			Poverty			Poverty			Poverty		
	non-poor	poor	non-poor	poor	non-poor	poor	non-poor	poor	non-poor	poor		
Parents abroad												
Parents abroad	80,5	19,5	100,0	77,4	22,6	100,0	79,8	20,2	100,0	74,9	25,1	100,0
None of the parents is abroad	75,1	24,9	100,0	73,4	26,6	100,0	74,8	25,2	100,0	70,9	29,1	100,0
Total	76,0	24,0	100,0	74,0	26,0	100,0	75,6	24,4	100,0	71,6	28,4	100,0
Type of households with children and persons abroad												
Households with children and persons abroad	79,8	20,2	100,0	75,2	24,8	100,0	80,2	19,8	100,0	71,7	28,3	100,0
Households with children and no persons abroad	75,1	24,9	100,0	73,7	26,3	100,0	74,7	25,3	100,0	71,6	28,4	100,0
Total	76,0	24,0	100,0	74,0	26,0	100,0	75,6	24,4	100,0	71,6	28,4	100,0

Table 35. Distribution of poor and non-poor children, by presence of parents in the family, 2019-2022

	2019		Total	2020		Total	2021		Total	2022		Total
	Poverty			Poverty			Poverty			Poverty		
	non-poor	poor	non-poor	poor	non-poor	poor	non-poor	poor	non-poor	poor		
Parents abroad												
Parents abroad	17,6	13,5	16,6	15,1	12,5	14,4	15,8	12,4	15,0	18,6	15,6	17,7
None of the parents is abroad	82,4	86,5	83,4	84,9	87,5	85,6	84,2	87,6	85,0	81,4	84,4	82,3
Total	100,0	100,0	100,0	100,0	100,0	100,0	100,0	100,0	100,0	100,0	100,0	100,0
Type of households with children and persons abroad												
Households with children and persons abroad	20,0	16,0	19,0	16,3	15,3	16,1	17,2	13,1	16,2	19,3	19,2	19,2
Households with children and no persons abroad	80,0	84,0	81,0	83,7	84,7	83,9	82,8	86,9	83,8	80,7	80,8	80,8
Total	100,0	100,0	100,0	100,0	100,0	100,0	100,0	100,0	100,0	100,0	100,0	100,0

Table 36. Impact of social benefits on child poverty by area of residence, 2019-2022

	<i>percent</i>											
	2019			2020			2021			2022		
	Area of residence		Total	Area of residence		Total	Area of residence		Total	Area of residence		Total
	Urban	Rural		Urban	Rural		Urban	Rural		Urban	Rural	
Poverty level before childcare allowance was granted												
poor	11,4	38,9	27,4	16,6	39,1	29,7	11,6	38,0	27,2	18,3	42,9	31,8
non-poor	88,6	61,1	72,6	83,4	60,9	70,3	88,4	62,0	72,8	81,7	57,1	68,2
Total	100,0	100,0	100,0	100,0	100,0	100,0	100,0	100,0	100,0	100,0	100,0	100,0
Poverty level before pension was granted												
poor	10,4	40,1	27,7	16,3	39,8	30,0	13,5	39,0	28,5	16,8	44,1	31,7
non-poor	89,6	59,9	72,3	83,7	60,2	70,0	86,5	61,0	71,5	83,2	55,9	68,3
Total	100,0	100,0	100,0	100,0	100,0	100,0	100,0	100,0	100,0	100,0	100,0	100,0
Poverty level before social aid was granted												
poor	7,1	37,5	24,8	13,6	37,6	27,6	10,8	37,8	26,7	14,2	42,6	29,7
non-poor	92,9	62,5	75,2	86,4	62,4	72,4	89,2	62,2	73,3	85,8	57,4	70,3
Total	100,0	100,0	100,0	100,0	100,0	100,0	100,0	100,0	100,0	100,0	100,0	100,0
Poverty level before childcare allowance and social aid were granted												
poor	11,4	40,6	28,4	17,2	40,7	30,9	13,1	40,4	29,2	18,6	45,3	33,2
non-poor	88,6	59,4	71,6	82,8	59,3	69,1	86,9	59,6	70,8	81,4	54,7	66,8
Total	100,0	100,0	100,0	100,0	100,0	100,0	100,0	100,0	100,0	100,0	100,0	100,0

Table 37. Structure of households with children with or without childcare allowances, by quintiles, 2019-2022

	2019			2020			2021			2022		
	Households with childcare allowances	Households without childcare allowances	Total	Households with childcare allowances	Households without childcare allowances	Total	Households with childcare allowances	Households without childcare allowances	Total	Households with childcare allowances	Households without childcare allowances	Total
Quintiles (consumption expenses)												
1	22,0	23,5	23,2	21,9	24,8	24,3	27,5	23,5	24,2	24,2	24,7	24,6
2	18,2	19,7	19,3	17,5	22,3	21,4	18,9	21,5	21,1	18,9	21,7	21,2
3	23,5	20,9	21,5	22,1	17,8	18,5	10,5	20,3	18,6	12,2	17,2	16,3
4	16,2	18,2	17,8	17,2	18,5	18,2	22,2	17,0	17,9	20,9	17,7	18,3
5	20,0	17,7	18,2	21,3	16,7	17,6	20,9	17,7	18,3	23,7	18,8	19,6
Total	100,0	100,0	100,0	100,0	100,0	100,0	100,0	100,0	100,0	100,0	100,0	100,0

percent

Table 38. Structure of households with children with or without social aid, by quintiles, 2019-2022

	2019			2020			2021			2022		
	Households with social aid	Households without social aid	Total	Households with social aid	Households without social aid	Total	Households with social aid	Households without social aid	Total	Households with social aid	Households without social aid	Total
Quintiles (consumption expenses)												
1	76,8	21,5	23,2	56,9	22,7	24,3	69,2	22,2	24,2	61,4	23,5	24,6
2	13,3	19,5	19,3	28,9	21,1	21,4	20,0	21,1	21,1	18,3	21,3	21,2
3	9,9	21,9	21,5	5,1	19,2	18,5	7,0	19,2	18,6	16,2	16,3	16,3
4	-	18,3	17,8	8,2	18,7	18,2	3,8	18,5	17,9	4,2	18,7	18,3
5	-	18,8	18,2	1,0	18,3	17,6	-	19,0	18,3	-	20,2	19,6
Total	100,0	100,0	100,0	100,0	100,0	100,0	100,0	100,0	100,0	100,0	100,0	100,0

percent

Table 39. Structure of households with children with or without childcare allowances and social aid, by quintiles, 2019-2022

	2019			2020			2021			2022		
	Households with childcare allowances or social aid	Households without childcare allowances and social aid	Total	Households with childcare allowances or social aid	Households without childcare allowances and social aid	Total	Households with childcare allowances or social aid	Households without childcare allowances and social aid	Total	Households with childcare allowances or social aid	Households without childcare allowances and social aid	Total
Quintiles (consumption expenses)												
1	27,3	21,8	23,2	26,1	23,8	24,3	33,8	21,8	24,2	27,6	23,9	24,6
2	17,5	19,9	19,3	20,1	21,8	21,4	19,9	21,3	21,1	19,1	21,7	21,2
3	22,2	21,3	21,5	19,5	18,3	18,5	9,6	20,9	18,6	12,8	17,2	16,3
4	14,8	18,8	17,8	16,1	18,8	18,2	19,3	17,5	17,9	19,3	18,0	18,3
5	18,2	18,3	18,2	18,2	17,4	17,6	17,5	18,4	18,3	21,2	19,2	19,6
Total	100,0	100,0	100,0	100,0	100,0	100,0	100,0	100,0	100,0	100,0	100,0	100,0

percent

Table 40. Repartition of households with children by quintiles depending on childcare allowances, 2019-2022

	2019			2020			2021			2022		
	Households with childcare allowances	Households without childcare allowances	Total	Households with childcare allowances	Households without childcare allowances	Total	Households with childcare allowances	Households without childcare allowances	Total	Households with childcare allowances	Households without childcare allowances	Total
Quintiles (consumption expenses)												
1	21,4	78,6	100,0	16,3	83,7	100,0	18,8	81,2	100,0	17,0	83,0	100,0
2	21,2	78,8	100,0	14,7	85,3	100,0	14,9	85,1	100,0	15,4	84,6	100,0
3	24,7	75,3	100,0	21,5	78,5	100,0	9,4	90,6	100,0	12,9	87,1	100,0
4	20,6	79,4	100,0	16,9	83,1	100,0	20,6	79,4	100,0	19,8	80,2	100,0
5	24,8	75,2	100,0	21,9	78,1	100,0	19,0	81,0	100,0	20,9	79,1	100,0
Total	22,5	77,5	100,0	18,0	82,0	100,0	16,6	83,4	100,0	17,3	82,7	100,0

percent

Table 41. Repartition of households with children by quintiles depending on social aid, 2019-2022

	2019			2020			2021			2022		
	Households with social aid	Households without social aid	Total	Households with social aid	Households without social aid	Total	Households with social aid	Households without social aid	Total	Households with social aid	Households without social aid	Total
Quintiles (consumption expenses)												
1	9,9	90,1	100,0	10,7	89,3	100,0	11,9	88,1	100,0	7,3	92,7	100,0
2	2,0	98,0	100,0	6,1	93,9	100,0	4,0	96,0	100,0	2,5	97,5	100,0
3	1,4	98,6	100,0	1,2	98,8	100,0	1,6	98,4	100,0	2,9	97,1	100,0
4	-	100,0	100,0	2,0	98,0	100,0	0,9	99,1	100,0	0,7	99,3	100,0
5	-	100,0	100,0	0,3	99,7	100,0	-	100,0	100,0	-	100,0	100,0
Total	3,0	97,0	100,0	4,6	95,4	100,0	4,2	95,8	100,0	2,9	97,1	100,0

percent

Table 42. Repartition of households with children by quintiles depending on childcare allowances and social aid, 2019-2022

	2019			2020			2021			2022		
	Households with childcare allowances or social aid	Households without childcare allowances and social aid	Total	Households with childcare allowances or social aid	Households without childcare allowances and social aid	Total	Households with childcare allowances or social aid	Households without childcare allowances and social aid	Total	Households with childcare allowances or social aid	Households without childcare allowances and social aid	Total
Quintiles (consumption expenses)												
1	29,2	70,8	100,0	22,9	77,1	100,0	27,8	72,2	100,0	21,6	78,4	100,0
2	22,4	77,6	100,0	20,0	80,0	100,0	18,8	81,2	100,0	17,4	82,6	100,0
3	25,6	74,4	100,0	22,4	77,6	100,0	10,2	89,8	100,0	15,1	84,9	100,0
4	20,6	79,4	100,0	18,9	81,1	100,0	21,5	78,5	100,0	20,4	79,6	100,0
5	24,8	75,2	100,0	22,1	77,9	100,0	19,0	81,0	100,0	20,9	79,1	100,0
Total	24,8	75,2	100,0	21,3	78,7	100,0	19,9	80,1	100,0	19,3	80,7	100,0

percent

© NATIONAL BUREAU OF STATISTICS
OF THE REPUBLIC OF MOLDOVA
106 Grenoble Str, Chisinau,
MD-2019, Republic of Moldova.
Tel.: (373 22) 40 30 00,
e-mail: moldstat@statistica.gov.md
<http://www.statistica.gov.md>