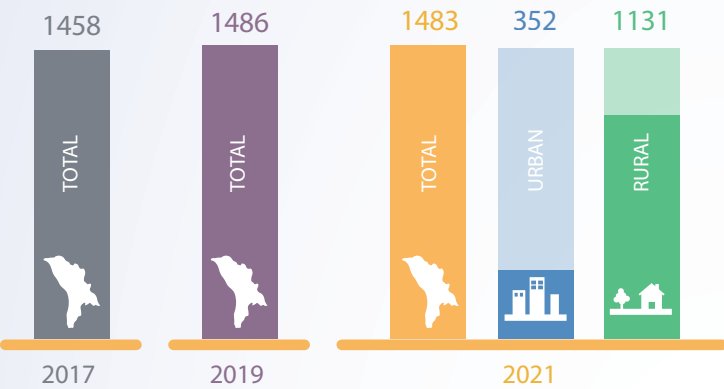




# Education\*

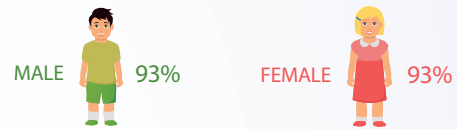
## Early education institutions



THE NUMBER OF CHILDREN IN EARLY EDUCATION INSTITUTIONS

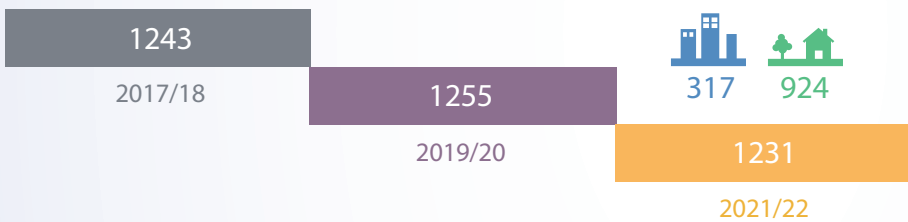


THE GROSS ENROLMENT RATIO IN PRE-PRIMARY EDUCATION, IN 2021

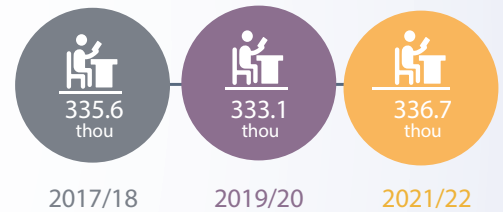


## Primary and general secondary education institutions

THE NUMBER OF INSTITUTIONS



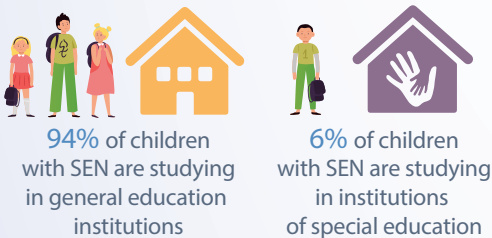
THE NUMBER OF PUPILS



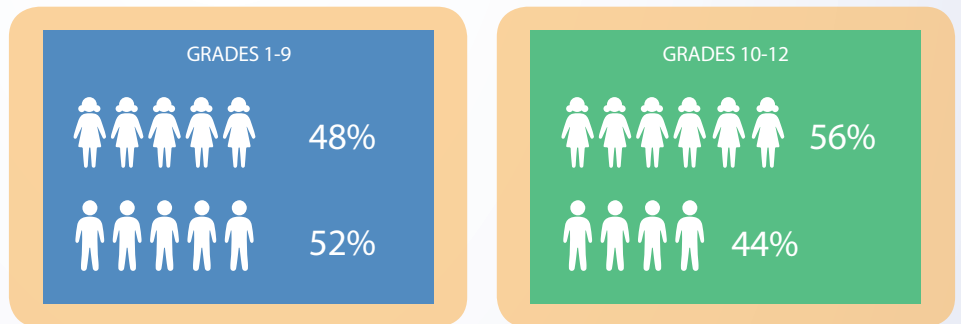
### CHILDREN WITH SPECIAL EDUCATIONAL NEEDS

In 2021/22

10.1 thousand children with special educational needs (SEN) were registered

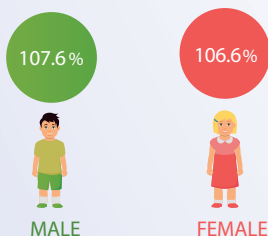


### GIRLS-BOYS RATIO, IN 2021/22

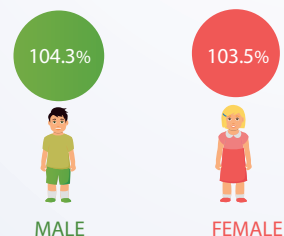


### THE GROSS ENROLMENT RATIO, IN 2021/22

#### PRIMARY EDUCATION

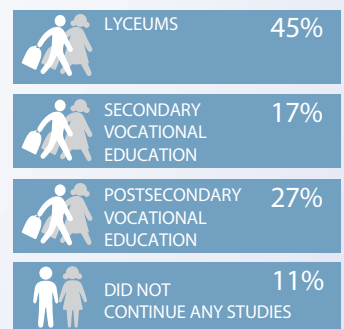


#### LOWER SECONDARY EDUCATION



### CONTINUATION OF STUDIES, IN 2021/22

After graduating from gymnasium education



\* Relative indicators were calculated based on population with usual residence. The information is presented without the data of the districts on the left side of the Nistru and municipality Bender, except of primary and general secondary education institutions located on this territory, which are subordinated to the Ministry of Education and Research. Data source: National Bureau of Statistics.

# Number of pupils per teacher in general primary and secondary education (daytime), in the 2021/22 school year

