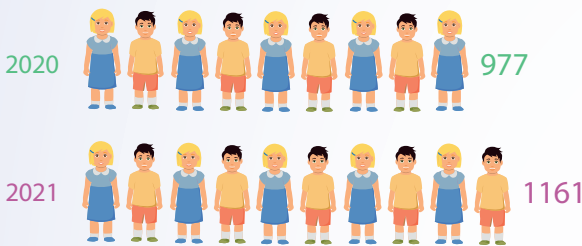


Social protection*

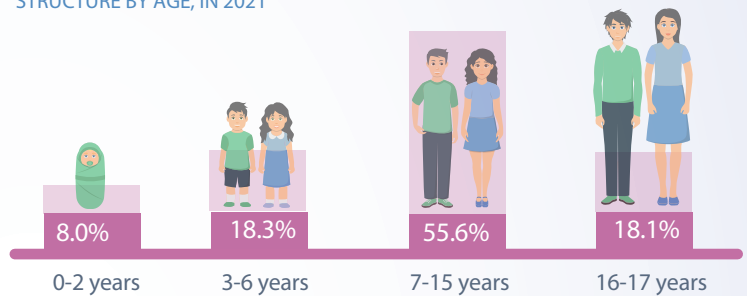


Children left without parental care, including temporary

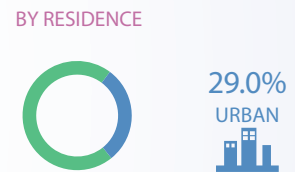
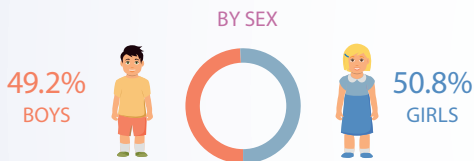
THE NUMBER OF CHILDREN



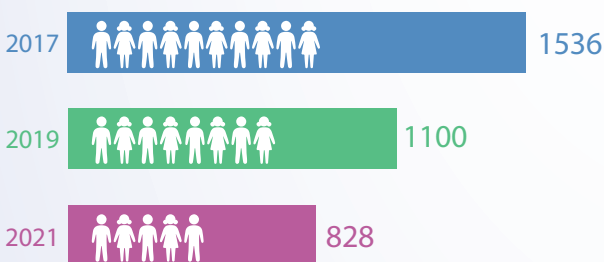
STRUCTURE BY AGE, IN 2021



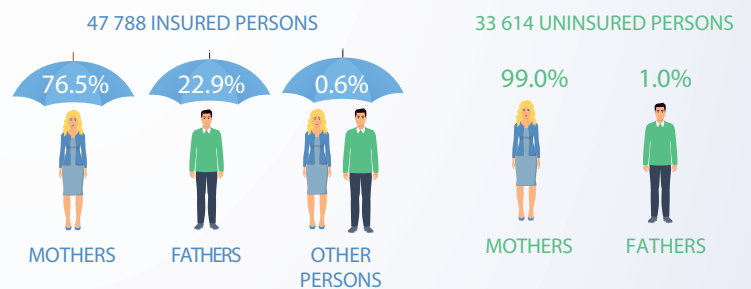
THE STRUCTURE OF CHILDREN WITHOUT PARENTAL CARE, IN 2021



Children in residential institutions



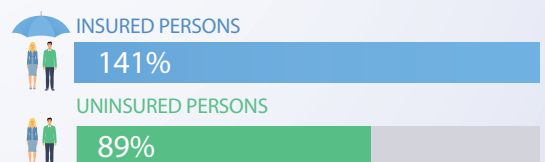
Beneficiaries of monthly childcare indemnity, as of 1st January 2022



The subsistence level for children, in 2021



THE RATIO OF SUBSISTENCE LEVEL AND MONTHLY CHILDCARE INDEMNITY, AS OF 1st JANUARY 2022



* The information is presented without the data on districts from the left side of the river Nistru and municipality Bender.
Data source: Ministry of Labor and Social Protection, National Social Insurance House, National Bureau of Statistics.